

**WEATHER**

Min.	Max.	Precip.
47	67	Trace
47	67	0.01
47	67	0.01
47	67	0.01
47	67	0.01
47	67	0.01
47	67	0.01
47	67	0.01
47	67	0.01
47	67	0.01

# The Chelsea Standard

**QUOTE**  
"The desires of youth show the future virtues of the man."  
—Cicero.

SEVENTH YEAR—No. 44

12 Pages This Week

CHELSEA, MICHIGAN, THURSDAY APRIL 24, 1969

10c per copy

SUBSCRIPTION: \$3.00 PER YEAR

## Tape Deck Purchased By Student Group

The Student Council's traditional yearly gift to Chelsea High School takes the form of a Sony tape recorder with separate amplifiers and speakers, purchased Tuesday night by Council President Ryan Smith and scheduled to make its debut tomorrow night at the council-French III class dance.

With the tape deck, students will be able to record music of their choice on re-usable tapes more resistant to scratching than records.

The tape-deck, a \$875 purchase, depleted the council funds to practically nothing, according to Smith. Most of the money came from the Nickel Carnival last November.

Funds from future fund-raising projects, the dance scheduled after the 9 p.m. showing of "Wait Until Dark" by the French III class, and pancake supper May 2, will be divided between a college scholarship and French scholarship.

## Adult Softball Will Organize For Summer

Teams of local softball fanciers will soon be facing each other on the diamonds as the beginning of adult summer softball draws near. Team members and captains should attend an organizational meeting at 7:30 p.m. April 30 at the Chelsea High school cafeteria, where schedules will be made and umpires and scorekeepers will be hired.

Prospective sponsors and others needing information should contact Robert A. Draper, league director, at 426-4111.

The Chelsea Recreation Commission softball season will start approximately June 1.

## Golf Team Wins Over Saline, Milan

Chelsea golf team defeated Saline and Milan in a triangular meet Thursday at Saline.

Dave Conklin and Dan Spaulding from Chelsea tied Naida from Milan for medalist honors at 38.

Ryan Smith and Mike McKeighan had 44, to give Chelsea a team score of 102. Saline had 179 and Milan claimed a team score of 173.

Chelsea Coach Pat Wade said all Chelsea team members played well although the course and greens were wet and soggy.

## Money Stolen from UAW Union Hall Monday Night

An unknown amount of money was taken from the UAW Hall at 218 S. Main, between 7 p.m. Monday night and 10:30 a.m. Tuesday by persons who forced the rear hall door.

Mitchel Pickelsimer, a union executive, reported the incident to Chelsea police at 10:30 a.m. Tuesday.

(Continued on page three)



A COOKIE DELIVERY is made to Mrs. David Aronson by Kathy Fairbanks, left, and Dawn Albrecht of Junior Girl Scout Troop 47. A record 6,781 boxes of Girl Scout cookies sold to area residents during the annual sales two months ago are being delivered.

## Schools Also Caught Up in Continually Rising Costs Spiral

Five new teachers, increased salaries for school personnel, two new buses and over-all rising costs have increased the Chelsea schools operating budget by approximately \$285,000, although only \$195,000 of that amount represents increased taxation.

State Aid, estimated to be up \$40,000 over the 1968-69 school year, will account for the difference.

The May 5 ballot will ask voters to decide on a 4.33 mill increase, but at the same time school officials find valuations in the district permit reducing the debt retirement levy by one-half mill, so the total increase will actually be 3.83 mills.

That is, \$195,000 in additional funds will be needed, along with the increased State Aid revenue, to operate the schools for the coming year.

For comparison—in the current year, the school district receives 11.22 mills from the county fixed allocation, 7.65 are voted and debt retirement requires 6 mills, for a total of 24.87. For the coming year, the fixed allocation again would rise to 11.98, and debt retirement would come down to 5.50 for a total of 28.70, 28.70 less 24.87 will equal the 3.83 total increase.

Where does all the money go? With 105 teachers and five more needed in the fall, a major part is represented by salaries and salary increases for teachers, custodians, bus driver and secretaries. There will be at least one additional industrial arts teacher, in line with the program to build a better vocational program.

(Continued on page three)

## May Fellowship Day Service Set At Zion Church

Church Women United May Fellowship Day services have been set for 1 p.m., May 2 at Zion Lutheran church.

The topic, "Beginning Anew," attempts to show that the differences that isolate the handicapped are skin deep, and that inside they share the human longings of companionship, belonging, economic independence, giving as well as asking for assistance.

The program will show the need for increased understanding, and more important, the creation of a plan to create new opportunities for the handicapped in the community.

Speaker will be Mrs. Venita Dickerson, founder of CAP, Inc., from Ann Arbor. All women of the community are invited to attend the service. A baby-sitting service will be provided. Leader will be Mrs. Howard Kern.



MRS. BRUCE SPENCER

## Receives Degree Saturday at Western Michigan

Mrs. Bruce Spencer received a Bachelor of Science degree and an elementary provisional teaching certificate during commencement exercises Saturday, April 19 in Reed Field House on the Western Michigan University Campus.

Mrs. Spencer, the former Suzanne Liebeck, daughter of Mr. and Mrs. James P. Liebeck, is a 1965 Chelsea High school graduate and 1967 graduate of Jackson Community College. While at WMU, she completed minors in elementary education, English and integrated creative arts. Mrs. Spencer has accepted a first grade teaching position at St. Mary's Catholic school in Paw Paw for the 1969-70 school year.

## CHS Open House Scheduled Tonight

Chelsea High school is sponsoring an open house tonight for parents of Chelsea High students.

Those attending will follow their children's schedules, become acquainted with school facilities and courses and meet teachers.

Coffee will be served in the cafeteria starting at 7 p.m. and classes will begin promptly at 7:30 p.m.

## Administration, Board Criticized By Group of Dissatisfied Parents

### Track Team Wins, 76-42, Over Dundee

Chelsea High track team extended their season record to 4-0 in dual meets Monday by defeating Dundee, 76-42.

Chelsea track coach Bert Kruse said Chelsea times were "not very outstanding" but depth enabled the team to win. The meet was interrupted by rain and wind several times and the asphalt track became slippery.

Rick Slane jumped 20' 0 1/2" to break the old long jump record of 20' 8" set by Don Sexton in 1962.

Del Gregory from Dundee gave the outstanding performance of the meet by winning high and low hurdles, long jump and shot put.

Jim Boylan placed second in shot put, followed by Randy Seitz in third. The high jump was won by Karsten Kargel's 5' 8" jump and Mike Bassett placed second.

Larry Blackwell won the pole vault by clearing 11', followed by Jim Wojcicki and Dan Hoover in second and third.

Lance Burghardt won the two-mile run in 12:05 and Tom Tirb placed third.

Chelsea's 880 relay team won with a time that "was not very outstanding," according to Kruse.

Doug Weatherwax won the mile run in 4:50. Mike Bassett placed third in the high hurdles. Mike McGinn won the 880-yard run in 2:09.1, followed by John Hepburn with a third.

(Continued on page six)

### Baseball Team Out-Hits Novi But Loses, 17-9

Although Chelsea's baseball team collected more hits than Novi in their game last Wednesday, April 16, they lost, 17-9.

Coach Carl Genack said ineffectiveness of three bulldog hurlers allowed Novi 17 walks, which "really told the story of the game."

He added that Chelsea did continue its good hitting by collecting 14 hits, led by Mike Harvey with three, Jack McClear, Doug Schoenberg, Craig Houle and Jeff Bust, with two each.

Novi 121-017-0-17 13 2  
Chelsea 000-027-0-9 14 2  
Lee Snow, Bill McMillan (6) and Tom VanWagner.  
Craig Houle, Tom Dettling (4), Jim Hercules (5) and Mike Harvey.

(Continued on page six)

## Rains Cool Off Rash of Spring Grass Fires

Recent rains have cooled the rash of grass fires plaguing southern Michigan and Chelsea this spring.

Chelsea firemen responded to two calls during the past week, a sharp decrease from the 10 to 15 calls per week during the past months.

The engine of a Mercury driven by John Thomas Olsinski of Clear Lake Trailer Park was ignited after a one-car accident on Clear Lake Rd. at 11 p.m. Friday night.

A train started a fire on the property of Inez Rank, 14080 Old US-12 and in several other locations along the tracks Saturday, burning over a total of approximately five acres of grass and woods.

## Musical Program Slated Sunday at St. Paul Church

St. Paul United Church of Christ is presenting a special musical program Sunday, April 27 at 7 p.m.

Included in the program will be numbers by each of the three choirs, selections by organist Paul Reineck on the newly-completed pipe organ.

Bruce Galbraith will direct the upstairs portion of the program, featuring the sacred choir and organ music and two numbers by Chelsea High school Madrigal singers directed by DiAnn L'Roy.

The downstairs program will include folk singing duo Bruce Galbraith and DiAnn L'Roy and Madrigal selections, "widowers" of wives in the St. Paul Choir and "The Better Way." This is a four-member combo with Larry Gorton on drums, Jeff Parsons playing first trumpet, Dick Jennings on second trumpet and George Cameron playing trombone. They will be playing popular music.

Refreshments will be served and an offering will be accepted.



INSPECTION TEAM: Retiring Iroquois District Commissioner Rolly Spaulding, right, and Harold "Bill" Baker, Portage Trails Council camping committee member, enjoy some rare-broiled steak and an after-dinner pipe as they visit campsites at Newkirk Boy Scout Camp, just outside Dexter, during the Adult Leader Training Outdoor Week-end. The week-end climaxed an eight-week training program for unit leaders.

## Thomas M. Steele Earns Silver Star in Vietnam

Army Sergeant Thomas M. Steele, 22, son of Mr. and Mrs. W. Steele, 13877 E. Old

112, Chelsea, received the Silver Star March 30 near Chu Lai, Viet-

nam. Steele received the award gallantry in action while engaged in ground operations against the enemy.

Steele was for actions from Nov. 23, 1968, while serving as a platoon leader on a Long Binh Group, on a helicopter mission in bad monsoon weather near Chop-Vann mountain.

During the mission, Steele was repeatedly while gathering important documents and intelligence information.

Steele opened fire on enemy positions while allowing the rest of the platoon to regroup and counter-attack in an open area where they were split by enemy fire.

Although wounded, he continued his mission which resulted in the capture of the cache and safe of intelligence information.

Steele returned Nov. 24 with the capture of enemy personnel, weapons and 11 enemy.

Steele is now assistant non-commissioned officer in charge of a platoon of the 1st Battalion, 1st Infantry, 3rd Infantry Division, 7th Infantry.

He entered the service in September 1967, and received basic training at Ft. Benning, Ga. He was sent to Vietnam.

Steele is now on a rest and recuperation leave in Sydney, Australia, returning to Vietnam for duty. He will be back in the 3rd May 15.

Steele graduated from Chelsea High school in 1965 and Howard Technical Institute before entering the Army. He has also received the Combat Infantryman's Badge, Purple Heart and the Bronze Star.

(Continued on page three)

## Chelsea Group Enters Battle of the Bands Contest in Saline

The "Pump Street Warehouse" band of Chelsea will be among 11 bands competing in the 1969 preliminary "Battle of the Bands" contest sponsored by Saline.

Drummers Larry Gorton, guitar-

(Continued on page three)

## LAUNCHING KITES at the Pack 415 Kite Show Sunday

at the Pack 415 Kite Show Sunday, April 27, at 10 a.m. in front of his father, Norman, Pack

Secretary, holding the string to his kite high over the

area. Mrs. Bauer, Den Mother to Den 5 between

Den 4 and Den 6, and Greg

Stocum, Jr., Den Chief for Den 1, and Greg

Stocum, right, Den 1. The large white kite was made

by Carner, the kite at left was made by Greg. The

sunny, breezy spring weather lifted almost all the

home-made kites high with little trouble and scouts

and their families enjoyed the contest.

Coffee will be served in the cafeteria starting at 7 p.m. and classes will begin promptly at 7:30 p.m.

(Continued on page three)









DAVID P. ORLOWSKI, son of Mrs. J. Orlovski, expects to report May 1969. He is a member of the U.S. Air Force and is currently stationed at the 34th Tactical Fighter Wing, Takhli Air Base, Thailand. He is a graduate of the U.S. Air Force Academy and is currently a second lieutenant. He is also a member of the U.S. Air Force Reserve and is currently a captain. He is a member of the U.S. Air Force Reserve and is currently a captain. He is a member of the U.S. Air Force Reserve and is currently a captain.

### Money Stolen from Hall

(Continued from page one)  
day. The building had been closed at 7 p.m. Monday by Union President Harold Salyer.  
Police say a neighbor saw two teen-agers run from the rear of the hall to Main St. at about 9:10 p.m. Monday after a crash attracted his attention, but he failed to call the police.  
Chelsea Police Sergeant David McCormick said the man told him during an investigation after the robbery that he did not call police because "Where I'm from in Ypsilanti, the police never came when you called." The thieves returned after they had been spotted by the man and took the money.  
The thieves appeared to know where the funds were since there was no evidence of a search.  
Pickelmeier said the funds did not belong to the Union.

### Battle of Bands

(Continued from page one)  
ist Ken Dove and organist John Michelson make up the Chelsea group. They will be performing some of their own music Saturday.  
Other bands competing are from Ann Arbor, Tecumseh, Ypsilanti, Manchester, Dexter, Milan, Clinton and Belleville. The groups will be bidding for a spot in the finals.



SEVEN LITTLE INDIANS, and one big one, gave the display to parents and guests at the meeting. They are, from left, Don Aldrich, Andy Pitzer, Jeff Powell, Greg Ringe, Jeff Peterson, Howard Bush, Scott Powers and back, Packmaster Doug Sindlinger.

### CHELSEA VILLAGE COUNCIL PROCEEDINGS

April 1, 1969  
Council Room  
Regular Session.  
This meeting was called to order by Pres. Pennington at 8:00 p.m. Trustees present: Miller, Gorton, Musbach, Clark, Chandler and Fulks.  
The minutes of the Regular Session of March 18 were read and approved.  
A special welcome was extended to Mr. Jim Miller and Mr. Bill Beeson, members of Dana's advertising staff who had been touring the village.  
Trustee Clark read a summary of the Police Dept. activity for the month of March as submitted by Police Chief Meranuck.  
Local Civil Defense Director Elwyn Beach informed the council of a meeting being held April 16th, at 7:00 p.m. at the North Campus C.D. Center in Ann Arbor. This meeting is regarding a new storm warning system and is being conducted by the U. S. Weather Bureau. The public is invited.  
A variance request was entered by Mr. Walter Harper to construct an addition to his home. The request was referred to the Planning Commission for a recommendation.  
BE IT RESOLVED: that the Electrical Code of Washtenaw County be in the same and is hereby adopted by the Village of Chelsea.  
Motion by Miller, supported by

Building Code and Zoning, Eldon Gorton.  
Recreation and Parks, Gene Miller.  
Planning Commission, Eldon Gorton.  
Municipal Building, A. E. Fulks.  
Tree Control, A. E. Fulks.  
New Streets, Steve Clark.  
Mayor Exchange, Arden Musbach.  
Pollution Control, A. E. Fulks.  
Motion by Clark, supported by Gorton, to approve the committee as presented by Pres. Pennington. Roll call: Years all. Motion carried.  
A discussion was held regarding a water problem on the property of John Elder. Trustee Chandler and Administrator Weber were instructed to investigate.  
Motion by Musbach, supported by Gorton, that a public hearing on the 1969 Village Budget, as required by law, be set for the Regular Session of the Council to be held on Tuesday, April 15, 1969 at 8:00 p.m. Roll call: Years all. Motion carried.  
Motion by Clark, supported by Chandler, to advertise for bids for police cars to be used by the Village Police Dept.; one car to

### 24 Years Ago...

(Continued from page two)  
a Chelsea High school graduate and completed the Nurses' Training school at Foote hospital, Jackson, in 1939.

### 34 Years Ago...

Thursday, April 18, 1935—  
The golden wedding anniversary of Mrs. and Mrs. L. Benjamin Lawrence occurred Monday and on Sunday afternoon a company of relatives surprised them at their home with a quiet celebration in honor of the event. A pleasant social time was enjoyed and a buffet lunch was served.

On Friday night of this week, April 19, 1935, a Townsend Club will be organized in Chelsea. The meeting will be held in the Kiwanis club room above the Recreation Restaurant.  
A committee consisting of J. E. Weber, A. G. Hindelang and P. G. Schaible, named to investigate the advisability of constructing stockyards in Chelsea, went to Owosso last Thursday to see a sale in operations at that stockyard.

If plans of the Chelsea common council materialize, from 30 to 40 men will be at work here next week on a work relief project. C. H. Elliott, county relief director, attended the meeting of the council Monday evening to discuss installation of a new storm sewer along the west and south sides of the village. On Tuesday two engineers were sent to go over the proposition and stated that if the village presents the survey of the project to the county office this week the work will probably be started next week.

be delivered June 1, 1969 and one car to be delivered December 1, 1969. Bids to be submitted to the Village Clerk no later than 6:00 p.m., April 15, 1969.  
Recognition was given to Bob Walz for his help in repairing the underground gas tank for the Civil Defense Emergency Control Center.  
Motion by Miller, supported by Fulks, to increase the Village Treasurer's Bond to \$25,000. Roll call: Years all. Motion carried.  
Motion by Chandler, supported by Gorton, to authorize and direct the clerk to issue checks in payment of bills as submitted. Roll call: Years all. Motion carried.  
General Fund: \$8,463.02.  
Motion by Clark, supported by Musbach, to adjourn the meeting. Roll call: Years all. Motion carried.  
Approved: April 15, 1969.  
Harold Pennington, President.  
Richard Harvey, Clerk.

**WATERLOO BEAUTY SHOP**  
Operated By Rosemary Klink.  
Open Tues. thru Sat., 8 a.m. to 6 p.m.  
**475-8895**  
CALL FOR APPOINTMENT

**IMPROVE YOUR HOME**  
Local Company — With Service  
★ Aluminum Siding  
★ Roofing  
★ Patio Covers  
★ Enclosures  
★ Awnings  
★ Replacement Windows  
★ Eaves Troughs  
★ Storm Windows  
★ Storm Doors  
★ Trailer Skirting  
★ Insulation  
**GEORGE MEYER COMPANY**  
5100 PLATT ROAD • ANN ARBOR • TELEPHONE 971-5200  
EXTERIOR HOME IMPROVEMENTS  
George Meyer — Bob Behnke — Ray Peterson

**Worry about rootworms when you plant. After that it's too late.**  
What's the sense of waiting until rootworms have gnawed their way into your corn before you put on an insecticide?  
Wiping out the pest at that late stage won't set your crop straight.  
Apply Bux® Ten Granular when you plant and quit worrying. Bux kills both resistant and non-resistant rootworms.  
Plant your corn as early as you like. Bux won't fall apart. No matter how wet it gets. You won't have to bother with a second cultivator application.  
Bux puts an end to rootworms from the beginning.  
**CHEVRON CHEMICAL COMPANY ORTHO DIVISION**  
7524 Hickman Road, Des Moines, Iowa 50322  
Part of the great group of Chevron companies.  
BUX — ORTHO CHEVRON DESIGN. BUX — REG. U.S. PAT. OFF.  
ON ALL CHEMICALS READ CAUTIONS, WARNINGS AND DIRECTIONS BEFORE USE.  
**BLAESS ELEVATOR CO.**  
Div. of Larrowe Feed Co.  
Phone GR 9-6511 Chelsea, Mich.

**CREDIT PROBLEM? NO PROBLEM!**  
CONTACT MR. SMALL CREDIT ADVISOR at **HENDERSON FORD**  
665-0871 Ann Arbor

**DANCER'S APRIL Shower of Savings**  
2-Piece SCOOTER SET With Matching Hat Sizes 7/8 thru 14/15 Only \$4.99  
PANT SHIRTS With Matching Hat Sizes 7/8 thru 17/18 Only \$3.99  
Culotte Shifts Sizes 7/8 thru 17/18 \$3.49  
Culottes With Straps By BOBBIE BROOKS Sizes 7 thru 15 \$6.88  
Culotte Skirts Sizes 7 thru 15 \$5.88 By BOBBIE BROOKS  
Big Selection of TEEN and LADIES SWIM WEAR USE OUR LAY-AWAY PLAN  
**Dancer's**

**COLLISION SERVICE**  
LOW COST RENTALS AVAILABLE  
EXPERT BODY & FENDER REPAIRING  
Featuring INFRA-RED AUTO BAKE OVEN  
Call PO 4-0050 • Free Estimates  
**DIETZ PAINT & BODY, INC.**  
3400 Ann Arbor Rd., Jackson At US-127 Interchange

**Chelsea Hardware**  
110 S. Main St. Phone GR 9-6311  
**PRO SWINGING SPRING SALE**  
PLUS — PRO HARDWARE'S DISCOVER ID AMERICA  
VACATION SWEEPSTAKES  
50 WINNERS IN '69. YOU MAY WIN A ONE WEEK VACATION IN NEW YORK, PHOENIX, LAS VEGAS, SAN FRANCISCO OR MIAMI.  
Fly the luxurious StarStream Jet via TWA. Stay and play at...  
ENTER FREE  
Here is all you do to enter—No purchase required. Enter as often as you wish. Pick up free entry blanks and complete details at any PRO HARDWARE STORE listed below. Entry must be deposited by April 26, 1969. Void where prohibited by law. All federal, state and local regulations apply.  
18" Molded Plastic ICE CHEST Reg. 8.49 778 SPECIAL  
Deluxe! High density polyethylene liner and outer shell; styrene bead insulation; aluminum ball handles; food tray and drain. Holds 37 quarts.

**Family Size 22" PORTABLE BRAZIER**  
ONLY 5.99 IN OTN.  
Chrome-plated grid with slide handles can be raised to different heights away from coals. Tubular steel legs, large wheels.  
USM "POP" RIVETOOL KIT Reg. 5.98 3.99 HARDWARE WEEK SPECIAL  
Sets all sizes of rivets up to 3/16" diameter. Have a "built-in" tight-set feature. Rivets and back-up plates included.  
HOUSEHOLD STAPLE GUN TACKER Reg. 5.95 5.70 Value HARDWARE WEEK SPECIAL  
WITH WIRE AND SCREW ATTACHMENTS. Holds 100 1/4" and 5/16" staples. All steel, chromed.  
(CASH THIS COUPON)  
"TUCK" MASKING TAPE ONLY 28¢ WITH THIS COUPON  
36-60 yd. masking tape. Meets government specifications for first quality.  
DISCOVER PRO VALUES  
HARDWARE WEEK SPECIAL  
EPOX-E The Household Task Force  
EPOX-E STEEL 1.00 VALUE 77c  
World's strongest filler—repairs all metals.  
EPOX-E CEMENT & FILLER 1.00 VALUE 1.59  
World's strongest bond—for wood, metal, fiberglass, concrete, etc.  
EPOX-E BLUE 1.00 VALUE 77c  
Waterproof, non-shrink, dries almost clear. Bonds metals, masonry, china, wood, plastics.  
(CASH THIS COUPON)  
MINIATURE RADIO Reg. 4.99 3.99  
Powerful 3 tube push in AM stations. Loud and clear. Includes earphone, 3000 battery and carry case.  
DISCOVER PRO VALUES  
(CASH THIS COUPON)  
AUTOMATIC 2-SLICE TOASTER Reg. 5.97 5.70 Value  
YEAR GUARANTEE  
DISCOVER PRO VALUES



Ads  
Taken  
Till 5 p.m.  
Tuesday

IT'S EASY TO  
BUY-SELL-RENT-  
HIRE & FIND WITH

**WANTED ADS**

Just  
Call  
GR 5-3581

**WANT ADS**

**The  
Chelsea Standard**  
**WANT AD RATES**  
PAID IN ADVANCE—All regular advertisements, 50 cents for 25 words or less, each insertion. Count each figure as a word. For more than 25 words add 2 cents per word for each insertion. "Blind" ads or box number ads, 10c extra per insertion.  
CHARGE BACKS—Same as cash in advance. With 10 cents bookkeeping charge if not paid before 5 p.m. Tuesday preceding publication. Pay in advance, send cash or stamps and save 15 cents.  
DISPLAY WANT ADS—Rate, \$1.10 per column inch, single column width only. 6-point and 10-point light type only. 12-point boldface type, 10c extra per line. 10c extra per word beyond 10 words. Minimum 1 inch.  
COPY DEADLINE—5 p.m. Tuesday week of publication.  
PATCHING AND PLASTERING.  
Call 479-1801.

**REAL ESTATE**

Do you want a home or cottage on a lake, a farm or country home, a building site? We have them.

**Eugene R. Young,  
Broker**

Phone 878-3792  
Mary Allen, 879-3828  
Virginia Visel, 426-2224  
**CUSTOM SPRAYING**—Voco interior white farm painting. J. L. Bird, phone 517-547-5447, Manistowish Beach.  
**FOR SALE**—2-bedroom home, A-1 condition. Ph. 479-7211 after 3:30 for appointment.

**ALLSTATE**

**INSURANCE**  
AUTO • BOAT • COMMERCIAL  
LIFE • HEALTH • HOME  
LIABILITY  
Phone Even. or Week-ends for  
**N. H. MILES, Agent**  
GR-5-8334

**Rummage & Bake Sale**

Sponsored by Spaulding for Children Auxiliary, Sylvan Town Hall Friday, April 25, 9 a.m. to 9 p.m. and Saturday, April 26, 9 a.m. to noon.

**PORTER**

Full-time, days. Company paid insurance and other benefits. Apply in person. Howard Johnson's Restaurant, 2380 Carpenter Rd., Ann Arbor.

**SPRING SALE**

Have 2 used Ski-Doo's left. Used trailers. Dietrich's Sales & Service, 18100 M-52, Chelsea. Phone 475-8120.

**Formal Wear**

**RENTAL SERVICE**  
Prom - Weddings - Special Events  
6 different colors.  
**Foster's Men's Wear**

**VOCO FARM INTERIOR WHITE**  
Barn Spraying. Cyron 2-E insecticide fly control. John L. Bird, 517-547-5447.

**WANTED**

**TYPIST**

and  
**General Office Work**  
Apply in Person

**Chelsea Standard**  
800 N. Main St. Ph. GR 5-3581

**WANT ADS**

**FOR RENT**—Country setting beautiful new duplex, furnished, one bedroom, dining, kitchen, living room, tile bath. Utility sliding glass doors to lovely patio at back. No children or pets. Ph. 426-3188. 37c

**HOSTESS**

Full-time, days. Company paid insurance and other benefits. Apply in person. Howard Johnson's Restaurant, 2380 Carpenter Rd., Ann Arbor.

**Chelsea and Dexter  
Area Homes**

**CAVANAUGH LAKE**—Beautiful setting, 100 ft. of lake-front. Lovely 3-bedroom, 2-bath, completely remodeled and fully carpeted home.

**DEXTER VILLAGE**—Sharp, tri-level 3-bedroom home. Nice family room, kitchen, built-ins, private yard.

**COUNTRY LIVING**—Farm-type home located on 1 acre. 3 bedrooms, 3-car garage. \$14,900.

**CHELSEA VILLAGE**—3-bedroom older home, good condition, nice yard, walk-out basement.

**HALF MOON LAKE**—2-bedroom cottage. Wooded setting, lake access. \$15,500. Terms available.

**NORTH LAKE**—4-bedroom lake-front home. Beautiful view, fireplace, lots of nice living space. Located in Inverness area.

**PLEASANT LAKE**—Nice 2-bedroom home. Beautiful lake room, nice lake-front lot. \$13,500.

**Eibler, Frisinger  
& St. Amour  
REALTORS**

Corner Old US-12 and Main St.  
Chelsea - 475-8681  
Dexter - 426-4659  
Evenings:  
Herman Koenn 479-7252  
Paul Frisinger 475-2621  
Helen Weiss 663-9160  
Bob Thornton 475-8857

**Used Equipment**

7 h.p. Springfield tractor with 38" mower, chains and snow blade. Good condition.

9 h.p. Bolens with 38" mower and tiller.

7 h.p. Jacobsen Chief tractor, 36" mower and snow blower attachment.

9 h.p. Simplicity Landlord with 42" mower. Engine completely overhauled.

9 h.p. Simplicity with rebuilt mower attachment.

6 h.p. Sears riding reel mower.

4 h.p. Simplicity Wonderboy, 24" mower with chains and snow blade.

5 h.p. Simplicity Wonderboy with 32" mower.

3 h.p. Goodall self-propelled 32" rotary mower.

Johnston reel trimlawn, Acco Power Reel.

Yardman self-propelled 21" rotary mower. Like new.

**Chelsea Hardware**

Phone GR 9-6311

**FOR SALE**—7 1/2 h.p. outboard Martin, Coleman 2-burner stove, Turner camp light, electric fence, mitre box, hay at 20c a bale, 2 large milk cans, rope and pulleys, hammer mill, modern blue bathtub, white "4" sink, other items. Ph. 475-7486.

**WANT ADS**

**USED TRACTOR TIRES**—Large inventory on hand. Also used passenger - truck - grader tires. Jackson Tire Brokers, M-106, M-108, Mich. Ph. 594-2225. 32c

**FEMALE HELP WANTED**—Domestic help needed for middle-aged woman from 11 a.m. to 5 p.m. North Lake Area. Call after 7:30 p.m. 475-8989. 37c

**WORK SHOE**

**HEADQUARTERS**  
Famous Red Wing Brand  
\$12.95 to \$26.95  
**Foster's Men's Wear**

**Formal Wear**  
**RENTAL SERVICE**  
Prom - Weddings - Special Events  
6 different colors.  
**Foster's Men's Wear**

**A-1 USED CARS**

'68 LTD 2-Dr. Hardtop  
'67 Mercury 4-Dr.  
'67 Chevy Chevelle  
'66 Corvair  
'66 Galaxie 500 Convertible  
'68 LTD 2-Dr. Hardtop  
'68 Club Wagon Bus  
'68 Rambler 4-Dr.  
'65 Chevy Hardtop  
'65 Galaxie 600 4-Dr. (2)  
'65 Ford 2-Dr.  
'65 Galaxie 500 2-door Hard Top  
'64 Ford 4-Dr. Hardtop (2)  
'63 Thunderbird Landau  
'63 Ford 4-Dr.

**Trucks**

'65 Chev Pick-up 1/2-ton  
'50 Ford Stake

**BEST  
SELECTION  
IN TOWN**

**1970 Maverick  
Here Today!**  
SEE IT TODAY

**PALMER FORD**  
Phone GR 5-8286  
Open Mon., Wed. & Fri. Till 9:00

**SHOES**

for the  
**Entire Family**  
1/3 - 1/2 Off  
Many even more  
than 1/2 off

**DANCER'S  
BARGAIN FLOOR**

For the best coverage you can get in top rated Insurance Co's.  
See  
**MARTIN E. MILLER**  
Home Owners, Farm, Car, Trailer, Cottage, Business & Personal Affairs.  
626 McKinley St. GR 5-5181  
Local Representative for  
Harry Lee French, Inc.  
Your Independent Agents.

**FOR SALE**—2 bunk bed springs and mattresses, 479-2394. 44

**THINKING ABOUT** buying a chain saw? Stop out for a free demonstration of the powerful, light-weight Pioneer. Dietrich Sales and Service, 18100 M-52, Chelsea. 475-8120. 21c

**VACUUM CLEANERS**—Electrolux authorized sales and service. James Cox, Manchester. Ph. 428-2981 or 428-8221. 42c

**SINGER**

Sewing machines, reconditioned. \$19.95 and up. Also Singer repossessed machines. Call NO 2-5569. This is a Singer authorized ad.

**Singer Company**  
114 S. Main St.  
Ann Arbor, Mich. 37c

**HALE'S**

**Tree Service**  
Call 479-7076, Chelsea 44

**REAL ESTATE**  
Need Listings  
Lake Property - Farms  
Vacant Parcels  
LOCAL SALESMAN  
H. T. HAYNES  
13825 Sauer Drive, North Lake  
Phone 475-7157  
EDWARDS REAL ESTATE  
AND INSURANCE  
Phone 488-3970 31c



**WANT ADS**

**BABYSITTING** done in my home. Call 475-8055. 44

**LADIES**

**NYLON HOSE  
SALE**  
66c pr.  
2 pr. \$1.27  
Reg. \$1.00 and \$1.38

**DANCER'S**

**SPECIAL SALE**  
We are having a special sale on low-mileage, one-owner, used cars, factory warranted, stop in and have.

**G. A. Sales & Service**  
Plymouth - Dodge - Chrysler  
Dodge Truck  
1855 Manchester Rd.  
Phone 475-8611

**ATTENTION:** Morality erects buildings all winter if you are in need of a commercial or agricultural building order before winter and want to save money. Quality materials and workmanship guaranteed. Call Petersburg 279-1855 collect or write to Box 84, Petersburg, Mich. for all your pole building needs see Morality Pole Builders today. 18c

**REAL ESTATE**

**FOR SALE**  
NEW LISTING—9-year-old, 3-bedroom country home. New carpeting. Ceramic bath. Full basement with rec-room. 2-car garage, one acre. On blacktop, two miles out. \$28,000.

**"LIKE NEW" COUNTRY HOME**  
3 bedrooms. New kitchen with built-in range, oven and dishwasher. Fireplace. Full basement. Breezeway and 3-car garage. 2 acres. Blacktop road. \$32,000.

**BUILDING SITES**—10 acres at \$7500.

**5 ACRES of woods at \$5000.**

**CLARENCE WOOD  
BROKER**  
646 Flanders St.  
Phone 479-4686 40c

**Specialized Painting**  
HOUSES - BARN  
BUILDINGS  
All work guaranteed. Now taking spring and summer orders. For information and estimate call  
**Phil Weitlauf**  
517-565-8047 49c

**PATRICK & COOK**—Free estimates on aluminum siding, gutters, awnings, additions, roofing and general maintenance. Porch railing, aluminum storm windows and doors installed. Please call Chelsea 479-4583. 11c

**Listen to that "all's-well" purr**

Your car's engine will "purr" with contentment after our experts change the oil and give it a good lubrication.

Sweet music to your ears is the purr of your engine, sure promise of pep, power and performance after our servicemen drain the sludge and fill the crankcase of your car with highest quality PURE OIL.

**PURE OIL PRODUCTS**  
**JIM'S PURE SERVICE**  
Phone 479-3541 501 SOUTH MAIN

**WANT ADS**

**LOST**—Black and white long-haired cat with black nose, near Dr. Lanes, answers to Tabby, reward, 426-4817. 44

**Assemblers**

**Immediate Openings**  
Apply in person 8 a.m. to 4:30 p.m. Monday through Friday at  
**Employment Office.**

**Fisher Body Division**

**General Motors Corp.**  
An Equal Opportunity Employer.

**Willow Run Plant**

An Equal Opportunity Employer.

**Landscape Foreman**

Unusual year-round opportunity for dependable man 25-35 years old, who has drive and desires to move ahead. Must be able to work with, and supervise 2-4 men; some mechanical ability necessary with landscape, nursery, or agricultural background desirable. Top pay and benefits for right man. Please reply in writing, giving background, experience, and references. Correspondence will be kept confidential.

**V. Fraleigh**

**LANDSCAPE ARCHITECT**  
2851 E. Delhi Rd., Ann Arbor, Mich. 44

**CAR & TRUCK LEASING.** For details see Lyle Christwell at Palmer Motor Sales, GR 5-3271. 49c

**MEN'S**

**WORK SHIRTS  
PANTS  
COVERALLS  
OVERALLS**

**DANCER'S**

**BASEMENT**  
WANTED—Toy trains made before 1945. Most kinds, any condition. Phone: Bruce Greenberg, 971-3216, Ann Arbor. 45

**FAMILY OF FOUR** wishes to rent a three-bedroom home. 878-6449 Pinckney. 44

**RUBBISH HAULING**

Write  
**BILL MOUCH**  
1971 Doyle Rd., Gregory, Mich.  
Phone Gregory 466-9534 38c

**APTS. FOR RENT**—Second-floor apt., furnished, for 2 persons; also very nice first-floor apt., with full basement, heat furnished. 479-5441 after 6 p.m. or all-day week-ends. 23c

**CLOGGED**

**SEWER**  
Reynolds Sewer Service  
We Clean Sewers Without Digging  
Drains Cleaned Electrically  
FREE ESTIMATES  
2-YEAR GUARANTEE  
Phone Ann Arbor NO 2-3277  
Sewer Cleaning Is Our Business—  
Not a Side-Line 38c

**ELECTROLUX**

**VACUUM  
CLEANERS**  
SALES and SERVICE  
**JAMES COX**  
Ph. 428-2931 or 428-8221  
Manchester

**WANT ADS**

**ROOM** for ambulatory woman, available May 1. Private bath and entrance, call 475-2773 any time. 46

**Maintenance Men**

Three years experience as Industrial Mill Wright or Industrial Electrician necessary. Excellent wages and fringe benefits. Apply at personnel office.

**Hoover Ball &  
Bearing Company**

Hoover Chemical Products Division  
435 W. Eight Mile Rd.,  
Whitmore Lake, Mich.

**Parents**

Rent a band instrument (on the rental-purchase plan) before you buy.

**AI Nalli Music, Inc.**

Chelsea Phone 475-7215

**CULLIGAN**

There are 2 young, strong men we will hire for "babysitting" fresh air jobs (Not salesmen). In return for a day's labor, we give high wages, uniforms, insurance, profit sharing, pension, bonus, and commission, etc. It adds up to an immediate, responsible opportunity.

**G. G. HOPPER**

**Building Contractors**  
Phone GR 5-5581  
Gregory 496-2148 40c

**SPRAY MATERIAL** for sale—Dormant and regular season spray at wholesale prices. Opa's Orchard, 1817 Rank Rd. Mornings only any time, week-ends. Phone GR 9-6468. 44

**Kern's**

**Rubber Stamp Shop**  
Phone 475-8522 after 5 p.m.  
530 Chandler St. Chelsea, Mich.  
48-Hour Service 48

**Evinger Real Estate**

Phone 426-5833  
or call Janice Foutch 426-4751

**FARMS - RESIDENTIAL  
LAKE PROPERTY**

**WANTED**—Steady employment driving ice cream truck and part-time plant work. Fine working conditions, good opportunity for veteran or man looking for change. Write Box 55 B, care of Chelsea Standard. 10c

**TRAVEL TRAILERS**—13 ft. and up; 10x55 ft. trailers. John R. Jones Trailer Sales, Gregory, Mich. Phone 498-2855. 43c

**GARDENS PLOWED and tilled.** Contact Don Proctor at 479-5451. 51

**WORK SHOE**

**HEADQUARTERS**  
Famous Red Wing Brand  
\$12.95 to \$26.95  
**Foster's Men's Wear**

**CAR RENTAL** by the day, week, end, week or month. Full insurance coverage, low rates. Call Lyle Christwell at Palmer Motor Sales, GR 5-3271. 26c

**WANTED**

driving ice cream truck and part-time plant work. Fine working conditions, good opportunity for veteran or man looking for change. Write Box 55 B, care of Chelsea Standard. 10c

**TRAVEL TRAILERS**—13 ft. and up; 10x55 ft. trailers. John R. Jones Trailer Sales, Gregory, Mich. Phone 498-2855. 43c

**GARDENS PLOWED and tilled.** Contact Don Proctor at 479-5451. 51

**WORK SHOE**

**HEADQUARTERS**  
Famous Red Wing Brand  
\$12.95 to \$26.95  
**Foster's Men's Wear**

**CAR RENTAL** by the day, week, end, week or month. Full insurance coverage, low rates. Call Lyle Christwell at Palmer Motor Sales, GR 5-3271. 26c

**WANTED**

driving ice cream truck and part-time plant work. Fine working conditions, good opportunity for veteran or man looking for change. Write Box 55 B, care of Chelsea Standard. 10c

**TRAVEL TRAILERS**—13 ft. and up; 10x55 ft. trailers. John R. Jones Trailer Sales, Gregory, Mich. Phone 498-2855. 43c

**GARDENS PLOWED and tilled.** Contact Don Proctor at 479-5451. 51

**WORK SHOE**

**HEADQUARTERS**  
Famous Red Wing Brand  
\$12.95 to \$26.95  
**Foster's Men's Wear**

**CAR RENTAL** by the day, week, end, week or month. Full insurance coverage, low rates. Call Lyle Christwell at Palmer Motor Sales, GR 5-3271. 26c

**WANTED**

driving ice cream truck and part-time plant work. Fine working conditions, good opportunity for veteran or man looking for change. Write Box 55 B, care of Chelsea Standard. 10c

**TRAVEL TRAILERS**—13 ft. and up; 10x55 ft. trailers. John R. Jones Trailer Sales, Gregory, Mich. Phone 498-2855. 43c

**GARDENS PLOWED and tilled.** Contact Don Proctor at 479-5451. 51

**WORK SHOE**

**HEADQUARTERS**  
Famous Red Wing Brand  
\$12.95 to \$26.95  
**Foster's Men's Wear**

**WANT ADS**

**PIANO TUNING**, Chelsea and area. Facilities for reconditioning and rebuilding. Used piano sales; conditioned grands and uprights. E. Eklund, 426-4420.

**FOR SALE**—Martin B-flat sax. Excellent condition. \$125. Ph. 475-7280.

**Custom Slaughtering**

By Appointment  
Complete Food and Meat Processing Service.

**Frozen Food Lockers**

**Frigid Products**  
LOCKER DEPT.  
Phone GR 5-8280

**SPRING'S HERE**

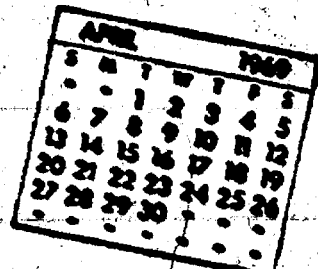
See us for the finest line of  
<







## Community Calendar



American Legion Auxiliary Post Presidents dinner meeting Tuesday, April 29, 6:30 p.m., at Schumm's.

Limeoneers, at the home of Nina Wahl, April 30 at 12:30 p.m. Please note change of date.

Meeting April 30, 7:30 p.m., at Chelsea High School cafeteria, for persons interested in adult softball this summer. Schedules, umpires and scorekeepers to be determined, etc. Call Robert Draper, 420-4111 for more information.

Pancake Supper Thursday, May 1, \$1 for all you can eat. Serving from 5 to 7 p.m. at high school cafeteria. Sponsored by the CHS student council. adv45

Open House at Spaulding for Children, 3660 Waltrous Rd., April 29, 1-4 p.m. and 8 to 10 p.m. Rummage sale, Sylvan Town Hall, April 25 and 26.

Social meeting VFW Auxiliary Monday, April 28 at 8 p.m., home of Mrs. Clyde Matthews. Guests welcome.

Rummage sale at Sylvan Town Hall Friday, May 9 and Saturday, May 10 by Rebekah Lodge. For pick-up phone 475-8893. adv46

Olive Chapter 108, Order of Eastern Star will celebrate their 75th anniversary with a dinner and a speaker, Frederic Keicher, at Chelsea High School Tuesday, April 29 at 7 p.m. Reservations with Mrs. Norman Schmidt.

Cards every Thursday afternoon at Korner House.

### Farm Bureau's FARMOWNERS Policy...



**DAVID D. ROWE**  
157 E. Summit St., Chelsea  
PHONE 475-8065  
**FARM BUREAU INSURANCE**

Companies of Michigan

Cub Scout Pack 455 meeting, 7 p.m., April 24 at South School, Pinewood Jerry, being pictures of one of their hobby collections.

Floor practice for Rebekah officers at the Masonic Temple Friday, May 2 at 7:30 p.m. Dinner reservations for the Chelsea Rebekah Lodge No. 120 District meeting on May 3 must be made to the secretary or Noble Grand at 479-8161 by Friday, April 25.

Parents Without Partners, Friday, April 25 at 8:15 p.m. St. Andrew's Episcopal church, 306 N. Division St., Ann Arbor. "Problems Related to the Single Parent" by speaker, James Wilton of Ann Arbor Family Service.

Council on Adoptable Children 3 p.m. Friday, April 25, Church of the Good Shepherd, 2145 Independence Blvd., Ann Arbor. Panel discussion by adults who were adopted as children. Public invited.

Wide Awake summer club, May 3, 1:30 p.m. at home of Marilyn Hinderer.

Rummage Sale for Farm Bureau Building, Thursday, April 24, 9 a.m. to 9 p.m., Friday, April 25, 9 a.m. to 4 p.m. Clothing, books, dishes, small items. Bring donations by April 21. Sponsored by Washington County Farm Bureau Women. adv44

TOPS club every Wednesday from 12:30 to 2:30 p.m. in the Rebekah hall. Call GR 5-8352. For night meeting call GR 9-3261.

American Legion and Auxiliary hospital equipment available by contacting either Mr. or Mrs. Eugene Martin, at 475-5867 after 4 p.m.

Inquiries regarding the Chelsea blood bank may be directed to Harold Jones of Central Fibre Products in the event that Mrs. Dudley Holmes is unavailable.

### Sharp Increase Noted In Bridge Crossings Since Fare Was Reduced

St Ignace—The 60 percent reduction in Mackinac Bridge fares last Jan. 1 has resulted in a 20.0 percent increase in bridge crossings in the first quarter of 1969, the Mackinac Bridge Authority reports.

"Should this trend continue, we can look forward to substantial improvement in tourist business on both sides of the Straits of Mackinac," said Authority Chairman Prentiss M. Brown.



SATURDAY WAS A SELL-OUT for Chelsea Jaycees, who sold 100 rolls of polyethylene "trash" bags during their door-to-door campaign and took orders for 40 more. Bob Schaeffer, left, was the first customer for Robert Updegraff, right, and Art Steinaway, one of five Jaycee selling pairs. Since

their supply of bags was purchased by the time one-third of Chelsea was canvassed, a second 100-roll order has been placed and the bags are expected in approximately two weeks. Persons who wish to place an order should call 475-8263.

### Ministerial Association Sponsoring Public Film Showing Sunday Night

The Chelsea Ministerial Association will sponsor a church community night Sunday, April 27 to view the movie, "The Antkeeper" with fellowship and discussion to follow.

The film will be shown Friday to residents of Chelsea Methodist Home and 7:30 p.m. Sunday to the public at the Methodist Home Chapel.

"The Antkeeper" tells the story of a gardener who decides to raise ants to add to the beauty of his gardens. Instead, the ants fight among themselves, succumb to the temptations of another's garden and in other ways cause the gardener grief.

He then decides to send his son to live among the ants, to become one of them and teach them what they are expected to do—and the ants kill his son.

The church night program will be open to all, especially for members of Chelsea area churches and youth groups. A free will offering will be received.

### BIRTHS

A son, Michael Allan, April 19, to Mr. and Mrs. James D. Dettling.

## DEATHS

### Stephen J. Baker Former Dexter Resident Dies at Stockbridge Home

Stephen J. Baker, 58, of 15800 Farnsworth Rd., Stockbridge, a former Dexter resident, died Saturday, April 19, at his home.

Mr. Baker was a retired employee of the University of Michigan Maintenance Department.

Survivors include his widow, the former Bernice Austin of Dexter; one daughter, Mrs. Franklin (Louise) Chamberlain of Lantana, Fla.; two grandchildren; one great-grandson; two brothers, Warren of Adrian and Leon of 5325 W. Huron River Dr., Dexter.

Funeral services were held Wednesday, April 23, from the Caskey Funeral Home in Stockbridge with the Rev. George T. Niven officiating. Burial was in North Waterloo Cemetery.

SPACE TRACKERS Aerospace Defense Command's space arm, the Fourteenth Aerospace Force, keeps track of the number, location, and orbital changes of all objects in space.

For weaving chair seats, cane is available in the following sizes: superfine, fine fine, fine, narrow medium and common.

### Huron River Watershed Council Elects Officers

Officers for 1969-70 were elected at the annual meeting of the Huron River Watershed Council Thursday, April 17.

Re-elected to their current positions were Douglas D. Cray, chairman, Hans H. Haughard, vice-chairman, and Ellis Amerman, secretary.

Other executive board members are Mrs. H. W. Denham, Jr., Chelsea, John Dillon, John G. Cartwright, James R. Cooper and Kenneth W. Keeton. A new executive secretary, Warren P. Miller, was appointed by the board to replace Jerome Fulton, who will leave in August. Until that time he will work on a special project.

Representative Marvin Esch addressed the group and the executive secretary gave an annual report.

Telephone Your Club News To GR 5-3581.

## Hardy Girl Scout Troop 58 Survives Frigid Camp-Out

Girl Scouts come in assorted sizes and giggles and they have a equal when it comes to enthusiasm, optimism and determination. However, even the hardest scout has a limit of endurance.

A case in point is Troop 58, a pretty hardy bunch.

Now, any leader will tell you, when you take a group of girls for the first camping trip you expect a few problems—and Troop 58 not only followed tradition but added a few twists of their own. Leader Mrs. James Lorenz grimly asserted there should be a badge given for just survival under such rigorous conditions.

The trip began nicely enough on that sunny Friday morning, April 11, as the scouts, with packs packed and jack knives sharpened, arrived at Wild Goose Lake. Tents were put up. Talk of snakes and other woody creatures was pooh-poohed. The cocoa was hot and strong and no one fell into the lake. During part of the afternoon the troop explored the area. On their return to camp they were greeted with the news that Mrs. Louis Foreman and her fellow gourmets were preparing a skinned horse's leg for supper. "Bloody" newspapers and jack knives presented a convincing scene.

"As the sun faded so did the warmth. The fire, or rather the lack of one, was the first indication of what was to come. Fire starters, kindling, sawdust and prayer finally coaxed up a sick little flame. And it got colder and colder and colder! When noses began frosting over the decision was made to get into the sleeping bags. "Don't worry!" a voice chirped. "It'll warm up in the morning." "Hey! Don't snakes go for warm places like sleeping bags?" someone asked. "Well, he'll have to fight me for mine," a determined voice muttered. At 4 o'clock Saturday morning, plucky Mrs. Lorenz broke the ice in the water bucket, washed up and decided to start the fire. She had about as much luck as the previous night. Even a patient leader finally reached the end of endurance.

"All right everybody! Out, out, but we're leaving."

No one was thawed out enough to argue. With the help of that stalwart assistant leader, Mrs. Haskell Wilson, Jr. the troop made it to Mrs. Foreman's home where everyone collapsed in the blissful warmth. Oh yes, Gypsy badges were completed during the camp-out and Troop 58's next overnight is in the planning stages.

### School Discipline . . .

(Continued from page one)

every whim," he said, then said that "many students demonstrate a lack of respect."

He was backed up by Herman Ashley who stated that he had served as chaperone for school bus trips for 10 years, and said that some of these parents should act as chaperones to see what "their darlings are really like."

Irwin asked for an adjournment to the board room after the meeting had gone on for about 40 minutes, but clusters of students, parents and school personnel remained in clusters around the cafeteria for about an hour to voice their opinions.

### Track Team Wins

(Continued from page one)

Mike Schnadt won the 440 yard dash with :57.7 and Dan placed second. Rick Slane won the 100-yard dash in :10.3 and Bennett placed third.

Mike Bassett placed third 180-yard low hurdles; Rick won the 220-yard dash in followed by Ted Bennett and Porath, second and third.

The mile relay team won 3:55.2.

The next meet will be at today against Milan. The originally scheduled to be at will be at home. Chelsea will participate in the Eagle Saturday at Jackson Park schools in Class B and 12 in A will compete, beginning a.m. for preliminaries and for running. Kruse thinks Chelsea has a good chance of winning Class B competition.

Public speaking is easy the thinking before you that's hard.

## a brand-new WHEEL HORSE tractor with FREE MOWER

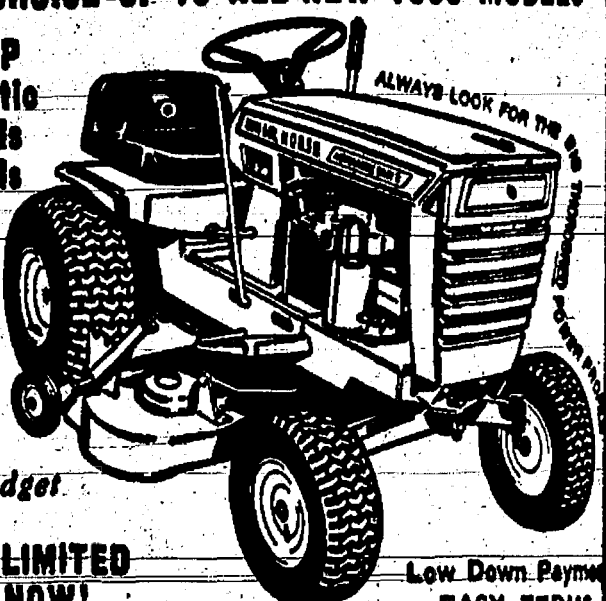
YOUR CHOICE OF 10 ALL-NEW 1969 MODELS

7 TO 14 HP  
• Automatic  
• 3/Speeds  
• 6/Speeds

A Size for Every Need

A Price for Every Budget

OFFER LIMITED ACT NOW!



## GAMBLES

## GAMBLES

## LAWN & GARDEN HEADQUARTERS



5-HP Powermaster Tiller with Power Reverse

**\$149<sup>95</sup>**

—\$7.50 Per Month

Rugged 5-HP Briggs & Stratton engine powers this deep-digging tiller. Cultivates a path up to 8" deep with 14" unbreakable tines.

### ARTISAN LAWN FERTILIZER

**\$2<sup>99</sup>**

20-10-5 Formula Covers 5,000 Sq. Ft.

'Greens-up' lawn sooner, longer! Non-burning, odorless and free-flowing. A low cost way to a great looking lawn. Buy now!

### DELUXE 20" SPREADER

65-Lb. Capacity

**\$11<sup>95</sup>**

New Accu-Rate system spreads seed or fertilizer evenly at any setting. On-off control. Non-rust finish.



ALWAYS BETTER BUYS AT GAMBLES

## CHELSEA LUMBER'S QUALITY-DESIGN GARAGES

With Free Plans, Detailed "Do It Yourself" Instructions



BIG CAR SIZE — 12' x 22' Everything To Build It on Your Slab!

Now Chelsea Lumber, as a member of one of the largest building-materials buying groups in the country, offers all the materials you need to build this beautiful garage at national savings! This price includes 10" pine heavy-duty bevel siding, windows, Crawford overhead door, 1 walk-in door, plus much more!

**\$489**

Complete Materials, Plans and Instructions Delivered - Cash Basis

TWO-CAR PACKAGE 20' x 22' \$769

DIAL GR 5-3391

CHELSEA LUMBER CO.



**AGRICULTURE**  
**IN ACTION** .....

**Continuing Fight For Full Bins**

Farmers remember when half or more of the corn crop was lost to the European corn borer. Not without reason did they chant, "One for the bird, one for the crow, one for the worm and two to grow . . .". Then as the corn dropped five kernels into the soil, the farmer would say, "That's all right, but the Indians, who learned from the Indians, added a fourth kernel for the blackbird to save your supply."

Now corn production has risen and less acres are devoted to corn. Right now, the United States produces half of the world's annual corn crop. Since pests don't stop for a country's borders, the list of new crawling and flying insects now attack our crops is growing.

European corn-borer has spread throughout America, and it first hit only about one ear of every 100 failed to contain a 1/4-inch worm eating its way through the kernels and stalk. A properly insecticide-treated ear produces about 87 worm-free ears out of every 100—and there are hundreds more ears of corn produced on every acre.

Whoever could make two ears of corn or two blades of grass to grow upon a spot of ground where only one grew before, would deserve better of mankind and do more essential service to his country than the whole race of politicians put together . . ."

It was right—in that full sense any nation's best defense is a good offense. Modern farmers using modern pesticides and other chemicals have made sure that those who remain full—no matter how many people they must feed.

**Jaycees Attend Spring Regional Meeting in Jackson**

Chelsea Jaycees took part in the annual Spring Region I meeting in Jackson last Wednesday.

Old and new business and speaker contests were included in the meeting and candidates for state officers were introduced and spoke.

Don Post was elected as new president. National Director after last year's battle.

Over 130 Jaycees attending the meeting enjoyed a Polish-style dinner.

Chelsea Jaycees attending the meeting were Don Proctor, newly-elected District 28 vice-president, Al Brown, newly-elected Chelsea Jaycees president, Dan Eder, Tom Eder, Jerry Blough, Si Hopkins, newly-elected internal vice-president and Tom Dunlap.

**White making repairs protect your loss of normal business profit with**

**Business Interruption Insurance**

See your A-O Man

**A. D. MAYER AGENCY, INC.**

"Your Protection Is Our Business"

215 Park St. Chelsea  
Phone 479-5061

**Auto-Owners Insurance Company**

# THE SUPERMARKET THAT'S JUST A LITTLE BIT BETTER


## Stop & Shop

14901 Old U.S.-12  
Corner at M-52  
Chelsea

"Triple R Farms" Fresh Dressed

### FRYERS

CUT-UP FRYERS 39¢ lb.



THE KNOW HOW OF INTELLIGENT MEAT BUYING IS REALLY THE 'KNOW WHERE'

Our customers have learned to depend on the outstanding quality of Stop & Shop meats — unfailing satisfaction with every cut they purchase. The finest quality, together with the experienced expertise of our meat cutting experts, makes an unbeatable combination!

Prices Effective Wednesday, April 23 through Tuesday, April 30, 1969

Lean, Tender, BOSTON BUTT

Pork Roast . . . . . 59¢ lb.

Lean, Tender, Meaty

Pork Chops . . . . . 89¢ lb.

Center Cut Rib

Lean, Tender

Pork Steaks . . . . . 69¢ lb.

Stop & Shop's Fresh, Lean, All American Beef

Hamburger . . . . . 59¢ lb.

3-Lb. Units or More

"Triple R Farms" Mich. Grade I

Skinless Wieners . 49¢ lb.

"Triple R Farms" Semi-Boneless

HAM . . . . . 69¢

Whole or Half

★ De-Fatted ★ Hickory Smoked ★ Ready-to-Eat

Lean, Tender

BONELESS & CUBED

Pork Cutlets . . . . . 79¢ lb.

"Triple R Farms" Mich. Grade I Fresh or Smoked

Liver Sausage . . . . . 49¢ lb.

## MAXWELL HOUSE COFFEE

1-Lb. Can 69¢

McDonald's Fresh, Delicious

Cottage Cheese . . . . . 23¢

1-Lb. Ctn.

Shomrock Country Fresh

Large Eggs . . . . . 49¢

Grade A All White Doz. In Ctn.

Breast O'Chicken Chunk Style

Tuna . . . . . 27¢

6 1/2-Oz. Can

Kraft's Salad Dressing

Miracle Whip . . . . . 48¢

Quart Jar

### Farm Fresh Produce

Fresh, Green	Asparagus . . .	Lb.	39¢
Fresh, Crisp	Cucumbers . 2	for	29¢
U.S. No. 2 New	Yellow Onions .	3-Lb. Bag	39¢
U.S. No. 1	Maine Potatoes	10-Lb. Bag	59¢

Keebler Zesta SALTINES

1-Lb. Box 33¢

Sunshine

HI HO CRACKERS

1-Lb. Box 39¢

Nabisco Chipsters

Snack CRACKERS

4 3/4-Oz. Box 37¢

Dare

Shortbread Twist

12 1/4-Oz. Pkg. 39¢

Franco-American

Spaghetti . . . . . 22¢

1-Lb., 11-Oz. Can

Del Monte Yellow Cling

Peaches . . . . . 25¢

Halves or Sliced 1-Lb., 13-Oz. Can

Del Monte

Golden Corn . . . . . 17¢

1-Lb., 1-Oz. Can

Pioneer Pure Granulated

Sugar . . . . . 55¢

5-Lb. Bag

Finest

Pork & Beans . . . . . 10¢

1-Lb. Can

Enriched All-Purpose Flour

Gold Medal . . . . . 49¢

5-Lb. Bag

Meadowdale

Strawberries . . . . . 25¢

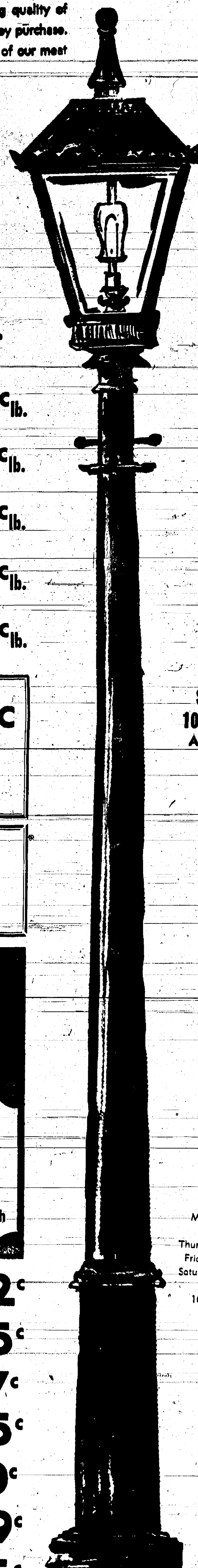
10-Oz. Pkg.

WE RESERVE THE RIGHT TO LIMIT QUANTITIES

OPEN SUNDAY 10 a.m. - 6 p.m. All Sale Prices Effective Sundays

Sorry, No Sales To Dealers

STORE HOURS: Mon., Tues., Wed., 9 a.m.-6 p.m. Thursday, 9 a.m.-9 p.m. Friday, 9 a.m.-9 p.m. Saturday, 8 a.m.-9 p.m. Sunday, 10 a.m. to 6 a.m.









# BOWLING NEWS

## Chelsea Women's League

Standings as of April 16

W	L
70	41
74	46
78	47
80	51
81	58
80	60
80	60
87	63
49	71
48	74
47	73
42	78

Games of better: N. Keizer, 158-161; C. McKinnley, 158-161; L. Stewart, 158-161; D. Ver, 158-161; B. Fike, 151; S. Feld, 158-161; D. Graden, 154; H. 101; R. Lutovsky, 193; S. 168; V. Harvey, 168; R. Hummel, 161-170; A. Knick, 161-209; N. Kern, 190; R. 177; R. Johnson, 169; F. Shoemaker, 184-220-180; R. 175-182; S. Ringe, 161; D. Eisenboiser, 161; S. Klink, 164; A. Tur, 161; H. Morgan, 170; A. 168; M. E. Sutter, 152; G. 213-180; A. Boham, 161; S. Scharphorn, 101; D. 158-180-169.

Games of better: B. McKinnley, 158-161; S. Tim, 158-161; R. Lutovsky, 151; R. 175-182; S. Ringe, 161; D. Eisenboiser, 161; S. Klink, 164; A. Tur, 161; H. Morgan, 170; A. 168; M. E. Sutter, 152; G. 213-180; A. Boham, 161; S. Scharphorn, 101; D. 158-180-169.

## Chelsea Lanes Mixed

Standings as of April 18

W	L
70	51
74	58
78	57
80	58
81	60
80	62
80	62
87	63
49	71
48	74
47	73
42	78

Games of better: N. Keizer, 158-161; C. McKinnley, 158-161; L. Stewart, 158-161; D. Ver, 158-161; B. Fike, 151; S. Feld, 158-161; D. Graden, 154; H. 101; R. Lutovsky, 193; S. 168; V. Harvey, 168; R. Hummel, 161-170; A. Knick, 161-209; N. Kern, 190; R. 177; R. Johnson, 169; F. Shoemaker, 184-220-180; R. 175-182; S. Ringe, 161; D. Eisenboiser, 161; S. Klink, 164; A. Tur, 161; H. Morgan, 170; A. 168; M. E. Sutter, 152; G. 213-180; A. Boham, 161; S. Scharphorn, 101; D. 158-180-169.

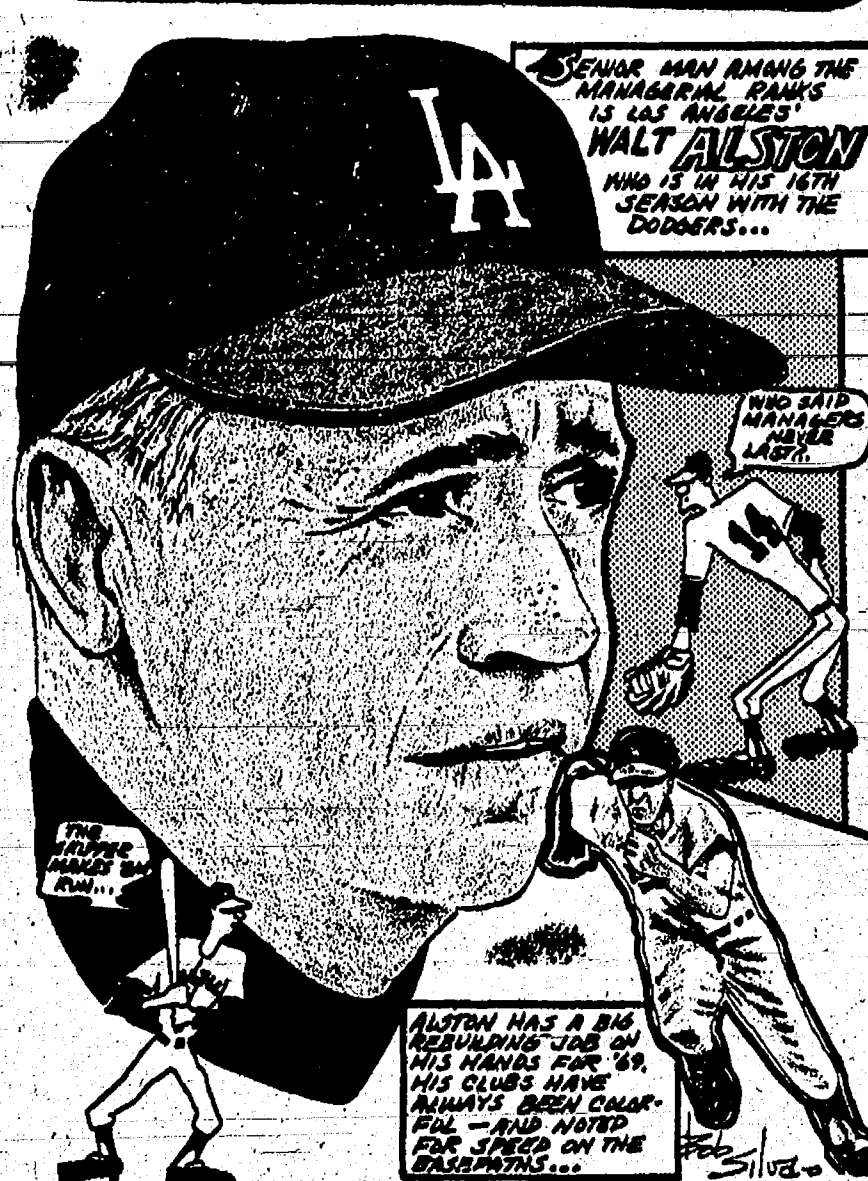
## Rolling Pin League

Final Standings—April 22

W	L
75	45
72	48
71	49
69	50
67	52
65	55
62	58
59	61
56	64
53	67
50	70
47	73
44	76
41	79
38	82
35	85
32	88
29	91
26	94
23	97
20	100

Games of better: N. Keizer, 158-161; C. McKinnley, 158-161; L. Stewart, 158-161; D. Ver, 158-161; B. Fike, 151; S. Feld, 158-161; D. Graden, 154; H. 101; R. Lutovsky, 193; S. 168; V. Harvey, 168; R. Hummel, 161-170; A. Knick, 161-209; N. Kern, 190; R. 177; R. Johnson, 169; F. Shoemaker, 184-220-180; R. 175-182; S. Ringe, 161; D. Eisenboiser, 161; S. Klink, 164; A. Tur, 161; H. Morgan, 170; A. 168; M. E. Sutter, 152; G. 213-180; A. Boham, 161; S. Scharphorn, 101; D. 158-180-169.

# SPORTS CORNER



ALTON HAS A BIG...  
WALT ALSTON  
WHO IS IN THE 15TH  
SEASON WITH THE  
DODGERS...

## Tri-City Mixed League

Standings as of April 18

W	L
78	53
76	55
74	57
72	59
70	61
68	63
66	65
64	67
62	69
60	71
58	73
56	75
54	77
52	79
50	81
48	83
46	85
44	87
42	89
40	91
38	93
36	95
34	97
32	99
30	101

Games of better: N. Keizer, 158-161; C. McKinnley, 158-161; L. Stewart, 158-161; D. Ver, 158-161; B. Fike, 151; S. Feld, 158-161; D. Graden, 154; H. 101; R. Lutovsky, 193; S. 168; V. Harvey, 168; R. Hummel, 161-170; A. Knick, 161-209; N. Kern, 190; R. 177; R. Johnson, 169; F. Shoemaker, 184-220-180; R. 175-182; S. Ringe, 161; D. Eisenboiser, 161; S. Klink, 164; A. Tur, 161; H. Morgan, 170; A. 168; M. E. Sutter, 152; G. 213-180; A. Boham, 161; S. Scharphorn, 101; D. 158-180-169.

## Junior Swingers

Standings as of April 19

W	L
72	40
70	42
68	44
66	46
64	48
62	50
60	52
58	54
56	56
54	58
52	60
50	62
48	64
46	66
44	68
42	70
40	72
38	74
36	76
34	78
32	80
30	82
28	84
26	86
24	88
22	90
20	92
18	94
16	96
14	98
12	100
10	102
8	104
6	106
4	108
2	110

Games of better: N. Keizer, 158-161; C. McKinnley, 158-161; L. Stewart, 158-161; D. Ver, 158-161; B. Fike, 151; S. Feld, 158-161; D. Graden, 154; H. 101; R. Lutovsky, 193; S. 168; V. Harvey, 168; R. Hummel, 161-170; A. Knick, 161-209; N. Kern, 190; R. 177; R. Johnson, 169; F. Shoemaker, 184-220-180; R. 175-182; S. Ringe, 161; D. Eisenboiser, 161; S. Klink, 164; A. Tur, 161; H. Morgan, 170; A. 168; M. E. Sutter, 152; G. 213-180; A. Boham, 161; S. Scharphorn, 101; D. 158-180-169.

## Nite Owl League

Standings as of April 21

W	L
80	52
78	54
76	56
74	58
72	60
70	62
68	64
66	66
64	68
62	70
60	72
58	74
56	76
54	78
52	80
50	82
48	84
46	86
44	88
42	90
40	92
38	94
36	96
34	98
32	100
30	102
28	104
26	106
24	108
22	110
20	112
18	114
16	116
14	118
12	120
10	122
8	124
6	126
4	128
2	130

Games of better: N. Keizer, 158-161; C. McKinnley, 158-161; L. Stewart, 158-161; D. Ver, 158-161; B. Fike, 151; S. Feld, 158-161; D. Graden, 154; H. 101; R. Lutovsky, 193; S. 168; V. Harvey, 168; R. Hummel, 161-170; A. Knick, 161-209; N. Kern, 190; R. 177; R. Johnson, 169; F. Shoemaker, 184-220-180; R. 175-182; S. Ringe, 161; D. Eisenboiser, 161; S. Klink, 164; A. Tur, 161; H. Morgan, 170; A. 168; M. E. Sutter, 152; G. 213-180; A. Boham, 161; S. Scharphorn, 101; D. 158-180-169.

## Senior House League

Final Standings—April 21

W	L
80	52
78	54
76	56
74	58
72	60
70	62
68	64
66	66
64	68
62	70
60	72
58	74
56	76
54	78
52	80
50	82
48	84
46	86
44	88
42	90
40	92
38	94
36	96
34	98
32	100
30	102
28	104
26	106
24	108
22	110
20	112
18	114
16	116
14	118
12	120
10	122
8	124
6	126
4	128
2	130

Games of better: N. Keizer, 158-161; C. McKinnley, 158-161; L. Stewart, 158-161; D. Ver, 158-161; B. Fike, 151; S. Feld, 158-161; D. Graden, 154; H. 101; R. Lutovsky, 193; S. 168; V. Harvey, 168; R. Hummel, 161-170; A. Knick, 161-209; N. Kern, 190; R. 177; R. Johnson, 169; F. Shoemaker, 184-220-180; R. 175-182; S. Ringe, 161; D. Eisenboiser, 161; S. Klink, 164; A. Tur, 161; H. Morgan, 170; A. 168; M. E. Sutter, 152; G. 213-180; A. Boham, 161; S. Scharphorn, 101; D. 158-180-169.

164; R. Schrader, 162; M. Ashmore, 159-161.  
Men's high series: R. Worden, 554; W. Griffith, 547; G. Miller, 554; A. Peterson, 543; B. Cruise, 538; A. Samms, 533; H. Kunzelman, 525; B. Stone, 524; W. Schrader, 524; C. Detling, 518; L. Hocking, 512.  
Men's high games: B. Stone, 211; A. Samms, 203; C. Detling, 203; H. Kunzelman, 202; B. Cruise, 202.

## Chelsea Suburban

Standings as of April 16

W	L
73	61
73	61
69	65
67	67
65	69
63	71
61	73
59	75
57	77
55	79
53	81
51	83
49	85
47	87
45	89
43	91
41	93
39	95
37	97
35	99
33	101
31	103
29	105
27	107
25	109
23	111
21	113
19	115
17	117
15	119
13	121
11	123
9	125
7	127
5	129
3	131
1	133

Games of better: N. Keizer, 158-161; C. McKinnley, 158-161; L. Stewart, 158-161; D. Ver, 158-161; B. Fike, 151; S. Feld, 158-161; D. Graden, 154; H. 101; R. Lutovsky, 193; S. 168; V. Harvey, 168; R. Hummel, 161-170; A. Knick, 161-209; N. Kern, 190; R. 177; R. Johnson, 169; F. Shoemaker, 184-220-180; R. 175-182; S. Ringe, 161; D. Eisenboiser, 161; S. Klink, 164; A. Tur, 161; H. Morgan, 170; A. 168; M. E. Sutter, 152; G. 213-180; A. Boham, 161; S. Scharphorn, 101; D. 158-180-169.

## Mike's TV

ANTENNA SERVICE  
Motorola Automotive Sound Systems  
Winegard Home Electronics TV Antenna Systems  
Insurance Claims  
For Free Estimate, Call Pinckney 878-3258 or 769-0130

**Cycle Registration Slows Down in '68**  
Lansing—Even though motorcycle registration hit 100,000 for the first time in Michigan history last year, the increase of the "bikes" has slowed appreciably in the past three years, the Michigan Department of State reported.  
Cycle registration jumped from 38,000 in 1964 to 64,000 in 1965, the largest increase in a single year. However, last year the hike was less than 11,000 over 1967.

**FIRST WOMAN NAMED**  
President Nixon has named Mrs. Patricia Kelly Hitt as assistant secretary for community and field services in the Department of Health, Education and Welfare. Mrs. Hitt was the first woman named by the President to a major position in his Administration.

**1.25 bottle of HOST**  
**Professional Spot Remover**  
with purchase of HOST Carpet Cleaner  
Now is the time to clean your carpets... without water... and take advantage of this special offer at the same time.  
No need to remove furniture... this wetting... no waiting... even in bad weather. Use rooms instantly.  
(Hurry! Offer good for limited time only.)  
**MERKEL BROS.**

**HARLEY-DAVIDSON**  
GAS or ELECTRIC  
**GOLF CARS**  
SALES  
  
**Meabon's TV, Furn. & Appl.**  
1170 S. M-52, Chelsea Phone GR 5-5191

**1969 POOL SALE!**  
Deluxe Redwood Winterized  
6'x12' POOL \$359  
8'x12' POOL \$419  
10'x12' POOL \$469  
12'x12' POOL \$519  
14'x12' POOL \$569  
16'x12' POOL \$619  
18'x12' POOL \$669  
20'x12' POOL \$719  
22'x12' POOL \$769  
24'x12' POOL \$819  
26'x12' POOL \$869  
28'x12' POOL \$919  
30'x12' POOL \$969  
32'x12' POOL \$1019  
34'x12' POOL \$1069  
36'x12' POOL \$1119  
38'x12' POOL \$1169  
40'x12' POOL \$1219  
42'x12' POOL \$1269  
44'x12' POOL \$1319  
46'x12' POOL \$1369  
48'x12' POOL \$1419  
50'x12' POOL \$1469  
52'x12' POOL \$1519  
54'x12' POOL \$1569  
56'x12' POOL \$1619  
58'x12' POOL \$1669  
60'x12' POOL \$1719  
62'x12' POOL \$1769  
64'x12' POOL \$1819  
66'x12' POOL \$1869  
68'x12' POOL \$1919  
70'x12' POOL \$1969  
72'x12' POOL \$2019  
74'x12' POOL \$2069  
76'x12' POOL \$2119  
78'x12' POOL \$2169  
80'x12' POOL \$2219  
82'x12' POOL \$2269  
84'x12' POOL \$2319  
86'x12' POOL \$2369  
88'x12' POOL \$2419  
90'x12' POOL \$2469  
92'x12' POOL \$2519  
94'x12' POOL \$2569  
96'x12' POOL \$2619  
98'x12' POOL \$2669  
100'x12' POOL \$2719  
102'x12' POOL \$2769  
104'x12' POOL \$2819  
106'x12' POOL \$2869  
108'x12' POOL \$2919  
110'x12' POOL \$2969  
112'x12' POOL \$3019  
114'x12' POOL \$3069  
116'x12' POOL \$3119  
118'x12' POOL \$3169  
120'x12' POOL \$3219  
122'x12' POOL \$3269  
124'x12' POOL \$3319  
126'x12' POOL \$3369  
128'x12' POOL \$3419  
130'x12' POOL \$3469  
132'x12' POOL \$3519  
134'x12' POOL \$3569  
136'x12' POOL \$3619  
138'x12' POOL \$3669  
140'x12' POOL \$3719  
142'x12' POOL \$3769  
144'x12' POOL \$3819  
146'x12' POOL \$3869  
148'x12' POOL \$3919  
150'x12' POOL \$3969  
152'x12' POOL \$4019  
154'x12' POOL \$4069  
156'x12' POOL \$4119  
158'x12' POOL \$4169  
160'x12' POOL \$4219  
162'x12' POOL \$4269  
164'x12' POOL \$4319  
166'x12' POOL \$4369  
168'x12' POOL \$4419  
170'x12' POOL \$4469  
172'x12' POOL \$4519  
174'x12' POOL \$4569  
176'x12' POOL \$4619  
178'x12' POOL \$4669  
180'x12' POOL \$4719  
182'x12' POOL \$4769  
184'x12' POOL \$4819  
186'x12' POOL \$4869  
188'x12' POOL \$4919  
190'x12' POOL \$4969  
192'x12' POOL \$5019  
194'x12' POOL \$5069  
196'x12' POOL \$5119  
198'x12' POOL \$5169  
200'x12' POOL \$5219  
202'x12' POOL \$5269  
204'x12' POOL \$5319  
206'x12' POOL \$5369  
208'x12' POOL \$5419  
210'x12' POOL \$5469  
212'x12' POOL \$5519  
214'x12' POOL \$5569  
216'x12' POOL \$5619  
218'x12' POOL \$5669  
220'x12' POOL \$5719  
222'x12' POOL \$5769  
224'x12' POOL \$5819  
226'x12' POOL \$5869  
228'x12' POOL \$5919  
230'x12' POOL \$5969  
232'x12' POOL \$6019  
234'x12' POOL \$6069  
236'x12' POOL \$6119  
238'x12' POOL \$6169  
240'x12' POOL \$6219  
242'x12' POOL \$6269  
244'x12' POOL \$6319  
246'x12' POOL \$6369  
248'x12' POOL \$6419  
250'x12' POOL \$6469  
252'x12' POOL \$6519  
254'x12' POOL \$6569  
256'x12' POOL \$6619  
258'x12' POOL \$6669  
260'x12' POOL \$6719  
262'x12' POOL \$6769  
264'x12' POOL \$681



## BORMAN IN BERLIN

Berlin—While Col. Frank Borman was a visitor in Germany, he said he thought an earth-orbiting station held out greater possibilities for space research than on the moon. Borman was an astronaut on the historic Apollo 8 space flight.

## HELLER ELECTRIC

Licensed Electrical Contractors

ALL TYPES OF WIRING

(No job too big or too small)

DAY OR NIGHT

CALL GR 9-3816

20640 Sager Rd., Chelsea

## SCHOOL LUNCH MENU

Monday, April 28—Sloppy joes, buns, slice cheese, buttered green beans, corn bread and butter, apple sauce, milk.

Tuesday, April 29—Mararoni salad with meat, buttered peas, rolls and butter, dessert, milk.

Wednesday, April 30—Oven fried chicken, sweet potatoes, country gravy, sweet potato puffs, buttered vegetable, bread and butter, dessert, milk.

Thursday, May 1—Varsity burgers, buns, buttered corn, relish sticks, apple crisp, milk.

Friday, May 2—Hot dogs, buns, trimmings, baked beans, Jell-O salad, cake, milk.

You can still make many friends by speaking nicely about people.

**1969 POOL SALE!**  
Deluxe Redwood "WINTERIZED"  
15' .. \$359  
18' .. \$419  
20' .. \$469  
24' .. \$539  
27' .. \$599  
10-YR. GUARANTEE  
VISCOUNT POOL & SPORTS

**FARES SLASHED 60%!**  
MACKINAC BRIDGE  
Great news for vacationers! 100 extra miles of travel fun with the dollars you save on each fare! Now you can cross Mighty Mac for sheer fun and excitement! A thrilling 10-mile round trip of breathtaking views from high above the big blue waters of "The Straits"—heart of America's historic water wonderland. Right where you want to be this summer! Enjoy BOTH peninsulas via the World's Most Beautiful Bridge. For FREE literature, mail this ad today. UMTA, P.O. Box 1108, Dept. W-69, IRON MOUNTAIN, MICH. 49801.

## SPENCER'S SINCLAIR

1445 SOUTH MAIN ST.

U-HAUL TRAILERS  
Complete Auto Service

All Work Guaranteed

PHONE 475-8810

Berlin Spencer, Bob Browning  
OWNERS

Would you  
like to hear  
a good  
clean story?



It goes like this: Buy a new Gas range and forget about oven cleaning, forever. Not bad, huh? And that's not the whole story.

The new Gas self-cleaning oven will clean itself automatically, spotlessly and do the whole job for about 2¢. It's a new way of life for the housewife. No more rubber gloves, strong detergents or harsh cleaning agents.

And while we're on the subject, this new Gas range simply cooks food better than anything you've ever used. It provides complete heat control. At all times. No matter what you're cooking. It will cook faster. Cleaner. And do it all for less money. See the new Gas self-cleaning oven today, at dealer or Michigan Consolidated Gas Company showrooms. It's great for women who like to cook, period. Cook with Gas ... it'll serve you right.

MICHIGAN CONSOLIDATED GAS COMPANY



ROCKET DERRY WINNERS at the Cub Scout Pack 445 meeting April 21 were, left to right, Don Aldrich, second place; Scotty Powers, first place; and Doug Beaumont, third place. Each of the winners was presented trophies by Don Bush on behalf of the Chelsea Jaycees, sponsoring organization for Pack 445. Several of the Cubs and Webelos were presented with awards they had earned and Pete Pitzen gave a demonstration of a volcano he had made. Mike Hastings, a Webelos, gave a presentation on various knots necessary for all Webelos to know before joining the Boy Scouts. The Pack received a transfer, Jeff Peterson, from Ann Arbor.



JOHN S. DICKSON

## NEW JAIL NEEDED

Pottawattami County, Ia.—Even the prisoners helped Sheriff Roy Michael prove he needed a new jail. Michael found his jail empty and this note, "I sincerely hope that this escape will help you get a new jail because you need one. I knocked out the wall in an hour. Sincerely Yours, Mike and Bill."

Telephone Your Club News  
To GR 5-3581.

## YES

WE ARE MAKING  
LONG-TERM FARM  
REAL ESTATE  
LOANS

SEE US

Ann Arbor, Mich. 48103  
P. O. Box 1006  
Ph. 769-2411 3645 Jackson Rd.NROTC Students  
Given Tour of  
Naval Air Station

John S. Dickson, son of Mr. and Mrs. Curtis F. Dickson of 623 Flanders St., Chelsea, attended a Naval Aviation Induction Tour at the Naval Air Station, Pensacola, Fla., recently.

He and his fellow NROTC students at the University of Michigan were flown to the "Cradle of Naval Aviation" for a close look at the men and machines used in training student naval aviators.

Highlight of his indoctrination tour was a flight in the Navy's T28B "Trojan" Basic Trainer Aircraft. The aircraft and pilot for his flight were provided by Training Squadron Six, the Navy's all-weather and instrument training squadron for pre-helicopter students at Pensacola.

Dickson, a 1968 Chelsea High school graduate, is a freshman at the U. of M.

Mary Elley Ashley  
Will Travel With  
Ferris Concert Band

Mary Ellen Ashley, daughter of Mr. and Mrs. Herman Ashley, 8835 Argonne, will be performing at five Michigan high schools April 29 and 30 as concert player in the 101-member Ferris State Concert Band.

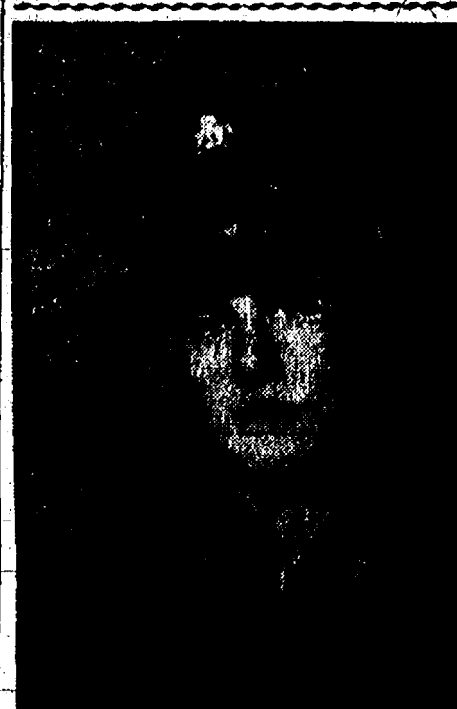
The band, directed by William Root, will play at Alma, Perry, Ovid, Flint Northwestern and Greenville High schools during the annual tour, scheduled to end with the Annual Awards Banquet.

Mary Ellen, a sophomore, is a member of the Ferris band for the second year. She played cornet in the Chelsea school bands from fifth grade through her senior year.

## HIGH SCHOOL IN COLLEGE

Rolla, Mo.—Pirooz Binesh of Abadan, Iran, came to Rolla, to finish his senior year in high school where his brother is a chemical engineering student at the University of Missouri. He had difficulty enrolling in school and the college let him take the university entrance examination. Binesh moved in with his brother as a freshman.

## Servicemen's Corner



SPEC. 4 JOHN W. MCGUIRE

## John W. McGuire

## Stationed in Germany

Spec. 4 John W. McGuire, 21, son of Mrs. Lewis McGuire of 20 E. Paycor Rd., Ann Arbor, has arrived in Frankfurt, Germany, where he will be stationed at Drakes Concern as a mechanic with the Military Police company.

Specialist McGuire entered the Service March 29, 1968 and received basic training at Ft. Knox, Ky., and on the job training at Ft. Dix, N. J. His tour of duty in Germany will last 22 months. His wife, the former Evelyn Robinson, will live with her parents at 10115 W. Liberty Rd., Chelsea. His address is:

Spec. 4 John W. McGuire  
RA 08091866  
508rd MPCCO  
3rd Armor Division  
APO New York N. Y. 09039

## GI INSURANCE

Servicemen are now covered up to \$10,000 while on active duty and for 120 days thereafter by Servicemen's Group Life Insurance. Unlike after World War II, however, they cannot keep this insurance as veterans insurance. Within 120 days after being separated from service they must convert their SGLI policies to policies with a commercial company. Nearly 600 companies have been approved by the VA to offer converted coverage.

## Club and Social Activities

## WOMAN'S CLUB

The Woman's Club of Chelsea met for their annual meeting April 22 at the McKune Library. Annual reports from all the officers and committee chairmen were read and given to the secretary for filing.

The members discussed and accepted Conrad Hafner's request to make arrangements for Heritage Day during Michigan Week, May 17 to 24.

Refreshments were served by the hostess for the evening, Mrs. Richard Schmidt.

## ESTHER CHAPTER

Easter Chapter of the Congregational church met April 17 at the church with Mrs. Geno Coltre and Mrs. Tom Harris as co-hostesses. Mrs. Lauryne White, president, called on Mrs. Coralee Miller for devotion, taken from the Daily Devotional Guide, about using talents, however small, in service to others.

Mrs. Marie Leach, president of the Women's Fellowship, introduced Mrs. James Hoffmeyer of the United Church Women who spoke to the group about a community project. They have started to help certain people in the community and need volunteers from each church to help. Hostesses served dessert and coffee after the meeting.

The next meeting will be May 15 at the home of Mrs. Darwin Downer, with Mrs. Elba Gage as co-hostess. There will be a silent auction at this meeting.

## VIVIAN OTTO CIRCLE

Vivian Otto Circle of the First United Methodist church held their monthly meeting April 19 in the church social center. 18 members and two guests attended a special pot-luck luncheon held in honor of chairman Mrs. Carl Stevens, who is leaving shortly to reside in their newly-purchased home in the Upper Peninsula. A corsage and gifts were presented to Mrs. Stevens.

Hostesses for the luncheon were Mrs. Mac Packard and Mrs. Gale Gilson. The tables were decorated in a travel theme with maps and all roads leading north to the new Stevens home.

Sunshine Chairman Mrs. Carl Schlosser reported on Easter flowers and cards sent to shut-ins. Program chairman Mr. Guy Barton announced an announcement concerning the Church Women United services to be held at Zion Lutheran church May 2 at 1 p.m. Mrs. Stevens wished to remind everyone that the next WSCS meeting will be held May 7 at 7:30 at the church. The program of ancient signs and symbols in religion was presented by Mrs. Clark Bushnell. Mrs. Stevens closed the meeting with a reading of a poem.

The next circle meeting will be held May 21, at 1 p.m. at the church. All church women are invited to attend.

## MARION KLINE CIRCLE

Marion Kline Circle of the First United Methodist church met at the home of Mrs. Frank Ramsey on Wednesday, April 16 for a 12:30 p.m. luncheon.

Mrs. Nancy Taylor was co-hostess, 13 members were present. Mrs. Thomas Smith acted as chairman in the absence of Mrs. Lloyd Merrill. She opened the meeting with a poem entitled, "The Church Speaks," by Elsie Strickland, sister of Mrs. Lyman Adams. Plans were made for the circle to serve the dessert luncheon on the evening of May 7 to the general WSCS members and members of the Wesleyan Service Guild who will be guests.

Mrs. Clarence Lillie and Mrs. Lyman Adams gave the devotionals and program. Chapter 17 of St. John was read and The Lord's Prayer was read from Matthew 6:8-13 and Luke 11:2-5. Mrs. Adams led the circle in reading The Lord's Prayer in unison.

All enjoyed the hymns played on records, "This Is My Father's World" and "Holy, Holy, Holy." Mrs. Charles Wood closed with prayer and invited the circle to meet at her home May 21 at 12:30 p.m.

## GRACE OTTO CIRCLE

Grace Otto Circle of the Chelsea First United Methodist church met April 15 at 8 p.m. at the home of Mrs. James Hoffmeyer with Mrs. Viola Knoll as co-hostess. 10 members were present.

A birthday gift thank-you from Grace Otto was read. She also sent a news letter from Epworth Theological College near Salisbury, Rhodesia (Africa) where she is the director of women's program.

It was announced that 58 sweaters have been shipped to Mr. and Mrs. Harold Humble, missionaries in South Africa. The money for shipping was donated by the members.

Several of the members will assist Mrs. Duane Lulek in presenting the program for the May 7 general WSCS meeting.

The program, "When Christians Are the Minority Group," was presented by Mrs. Jack Pfeifle and was followed with questions for discussion. The devotion, "Faith That Triumphs," were presented by Mrs. Albert Peterson.

The May 20 meeting will be held at the home of Mrs. Robert Schaefer.

## KINDER KLUB

On April 22 Kinder Klub met at the home of Mrs. Donald Bergman, a guest counselor at Chelsea High School.

Two guests, Mrs. Erwin Kie and Mrs. Don Alber, were present. Mrs. Edson Whitaker, Fred Hoffman, Mrs. Don Doll, Mrs. Bill Roberts attended Spring Planning meeting of Michigan Child Study Group. Bronson April 19. Mrs. White reported that there were approximately 250 women present.

Mrs. Elly N. Peterson, co-man of the Republican National Committee was the guest speaker for the day.

The next meeting will be at the home of Mrs. Robert Headrick, May 13. There will be installation of officers. Mrs. Blaine Lyle, Mrs. Robert Headrick were hostesses for the evening.

Dry mustard can be transformed into hot English mustard simply mixing it with cold water. Allow to stand 10 minutes to develop flavor.

SPECIAL  
SCHOOL  
ELECTIONNOTICE OF SPECIAL ELECTION OF THE  
QUALIFIED ELECTORS OF

CHELSEA SCHOOL DISTRICT

Washtenaw and Jackson Counties, Michigan

To Be Held

Monday, May 5, 1969

TO THE QUALIFIED ELECTORS  
OF SAID SCHOOL DISTRICT:

Please Take Notice that a special election of the qualified electors of Chelsea School District, Washtenaw and Jackson Counties, Michigan will be held in the Large Grade Instruction Room of the Dwight E. Beach School, in the Village of Chelsea, Michigan, on Monday, May 5, 1969.

THE POLLS OF ELECTION WILL OPEN AT 7:00 O'CLOCK A.M., AND CLOSE AT 8:00 O'CLOCK P.M.

The following proposition will be submitted to the vote of the electors qualified to vote thereon at said special election:

Shall the limitation on the total amount of taxes which may be assessed against all property in Chelsea School District, Washtenaw and Jackson Counties, Michigan, be increased by 11.98 mills on each dollar (\$11.98 on each \$1,000) of the assessed valuation, as equalized, of all property in said district for the year 1969, for the purpose of providing additional funds for operating expenses (7.65 mills of the above increase is a renewal of 7.65 mills for operating purposes which expired with the 1968 tax levy and 4.33 mills is additional operating mileage)?

Only resident qualified school electors who are registered with the city or township clerk of the city or township in which they reside are eligible to vote at this election.

I, Sylvester A. Leonard, Treasurer of Washtenaw County, Michigan, hereby certify that, as of March 14, 1969, the records of this Office indicate that the total of voted increases over and above the tax limitation established by the Constitution of Michigan in any local unit of government affecting the taxable property located in Chelsea School District, Washtenaw and Jackson Counties, Michigan, is as follows in Washtenaw County:

By Washtenaw County:	1 1/4 Mills, 1953-1972 Incl. \$1,490,000 unlimited 1969-1982, incl.
By Sylvan Township:	None
By Sharon Township:	None
By Ezeedam Township:	None
By Lima Township:	None
By Lyndon Township:	None
By Dexter Township:	None
By Chelsea School District:	\$2,200,000 unlimited 1969-1982, incl.
By Washtenaw County Intermediate School District:	\$2,360,000 unlimited 1969-1982, incl.
By Washtenaw Community College:	1 1/4 Mill 1959 and future years

Sylvester A. Leonard  
Treasurer  
Washtenaw County, Michigan

I, Marilyn E. Johnson, Treasurer of Jackson County, Michigan, hereby certify that, as of March 14, 1969, the records of this Office indicate that the total of voted increases over and above the tax limitation established by the Constitution of Michigan, in any local unit of government affecting the taxable property located in Chelsea School District, Washtenaw and Jackson Counties, Michigan, is as follows:

By Jackson County:	1.35 Mills 1969 - Indefinite
By Grass Lake Township:	2 Mills, 1969-1972
By Waterloo Township:	None
By the School District:	None

Marjorie Cox  
Deputy Treasurer  
Jackson County, Michigan

This Notice is given by order of the Board of Education of Chelsea School District, Washtenaw and Jackson Counties, Michigan.

CHARLES M. LANCASTER  
Secretary, Board of Education

Dated: April 21, 1969.

Tastes  
good!Milk's a taste  
treat for the  
entire family  
to enjoy  
daily.

Arrange delivery of our

top-quality milk and other dairy products.

WEINBERG DAIRY

QUALITY PASTEURIZED DAIRY PRODUCTS

20056 W. Old US-12

Phone GR 5-5771

Complete feeding rations for  
all your livestock, poultry.FARMERS'  
SUPPLY CO.

PHONE GR 5-5511

YOU'LL PROFIT  
FROM BETTER  
FEEDSExtra proteins, vitamins and  
minerals are scientifically  
blended to promote your  
stock's growth and health,  
and to boost your profits.





Mrs. James Bristle

### Mrs. James Bristle Vows Exchanged at Methodist Church

When Ann Boyer became Mrs. James Bristle at First United Methodist church, Chelsea, April 23, she exchanged vows with a man who is a graduate of the University of Michigan and a member of the church.

Rev. Robert Worgess administered the ceremony. The bride, Ann Boyer, 23, of 10 Sycamore St., was the daughter of Mr. and Mrs. Donley W. Boyer, 10 Sycamore St., and the son of Mr. and Mrs. Elmer Bristle, 18271 Birch Rd.

Care Warren sang "The Prayer" and "O Perfect Love." The 250 guests present were seated in the sanctuary.

The bride wore a dress of white tulle with a fitted bodice and a full skirt with tiers of long sleeves with points at the center of her hands. The chapel-length train was held at the waist with a white bow. Her shoulder-length veil was held with Algonquin lace and pearls. She carried a bridal bouquet of orange blossoms and white roses.

For traveling the bride wore an off-white, red and navy plaid sleeveless shift with bone shoes and gold and brown tweed Pendleton coat.

After a one-week wedding trip to Niagara Falls, the couple will be at home on Sco Church Rd.

The bride is a graduate of Chelsea High School and is employed at Ann Arbor Telephone Employees Credit Union. Her husband attended Chelsea High school and Michigan State University and is employed in farming with his father.

**MODERN MOTHERS**  
Modern Mothers' Tuesday night meeting was called to order at the home of Mrs. Vern Otto, with Mrs. Philip Hume as co-hostess.

The speaker for the evening was Dean Litgard, director of education at the U. of M. hospital. He spoke about "preparing your child for hospitalization." A slate of officers was presented to the club and election and installation will be held at the May 12 meeting.

**FEMALE PROGRESS**  
Japanese women have progressed from a voteless status prior to 1947 to positions of great responsibility—as college presidents, cabinet members, and seats in the Diet.

Telephone Your Club News To GR 5-5581.

### TIPS for your TOP

from

### BOBBY and FRAN

We need not be plagued by that won't hold a curl because it lacks body—not any more. Now we have a bodi-fier. It's easy to obtain—not only as long a process as a permanent. It gives you a natural curl, but adds that important body to your hair that makes it easy to handle, beautiful when set. Your hair will resist treatment for several weeks. We have really improved operators, experienced, courteous, and they will give you a personal beauty in when they work on your hair. We honestly think you'll be coming in—for the bodi-fier—for any of the other services we offer at

Mirror Beauty Salon  
Phone 652-0814  
2333 Jackson Rd., Ann Arbor

### Lindauer-Foster Vows Exchanged in Calamazoo Church

Christine Marie Lindauer and Robert P. Foster were united in marriage Saturday afternoon at St. Thomas More student parish, Calamazoo.

The Rev. Fr. Adrian Wade spoke the vows to the daughter of Mr. and Mrs. Arthur Lindauer of 260 Fletcher Rd., and the son of Mr. and Mrs. Dudley Foster, 481 W. Middle.

The bride wore a street-length A-line white linen dress with lace accents and short slightly flared sleeves. She wore a white bow with shoulder-length veil.

Robert Allen and Sarah Lindauer, sister of the bride, were honor attendants.

The couple plan to return today from a wedding trip to northern Michigan and will live in married student housing on the Western Michigan University campus until Scott's graduation in June. Sarah, a 1967 Chelsea High school graduate, is a sophomore medical technology student and her husband will receive his degree in education.

### Marshall-Adkins Vows Spoken at Church of Christ

Newlyweds Mr. and Mrs. Dempsey Adkins are making their home at 2683 W. Ellsworth Rd., Ann Arbor.

The former Virginia Lee Marshall, daughter of Mr. and Mrs. Edd Marshall of Manchester and the son of Mr. and Mrs. Lonnie Adkins of Grass Lake were united in marriage on April 4.

The minister, Murray S. Hudgins performed the ceremony at the Church of Christ, Chelsea.

The bride wore a floor-length gown of sheer nylon over satin with chapel-length train. Her bouquet was made of white roses.

Miss Beatrice Marshall, sister of the bride, and Larry Adkins, brother of the bridegroom, were honor attendants. Mrs. Richard Steele, also a sister of the bride, Miss Mini Steele, of Ann Arbor, and Miss Susan Rogers of Grass Lake were bridesmaids.

Akel Marshall, brother of the bride, Mark Erickson of Ann Arbor and Luke Collingsworth of Chelsea were ushers.

The couple greeted guests at the Chelsea Rod & Gun Club after the ceremony.

### Home Economics Study Groups Calendar

Week of April 23-30  
Thursday, April 24—Young Homemakers, home of Mrs. Bea Ann-Lessner, Old US-12, Chelsea. Co-hostess, Arlene Grau.  
Monday, April 28—Pittsfield No. 2, place undecided.  
Tuesday, April 29—Wörden, home of Mrs. Harold Reckol, 3430 Six Mile Rd., South Lyon.



### BOY SCOUT NEWS

**TROOP 420**  
Boy Scout Troop 420 met Monday night, April 21 at the American Legion Hall at Cavanaugh Lake. The Bat and Flaming Arrow Patrols finished their patrol flags. All three patrols worked on second class and scout crafts. They also worked on how to use an axe and knife.

Richard Worden, scribe.



Mrs. Steve Dean Caudill

### Maryellen Ostram, Steve Caudill On Honeymoon in California

Newlyweds Mr. and Mrs. Steve Dean Caudill are honeymooning in California for two weeks after their marriage in Holy Rosary church Saturday afternoon, April 19.

The Rev. Joseph M. Robb performed the ceremony uniting the former Miss Maryellen Ostram, daughter of Mr. and Mrs. Edward W. Ostram of Flint with the son of Mr. and Mrs. Steve P. Caudill of Chelsea.

The bride chose a wedding gown of chantilly lace and silk organza over a tulle taffeta fashioned in Empire style with pearl accented Peter Pan collar and long tapered sleeves. From the high rise all lace bodice the skirt falls in A-line to floor-length with a divided overskirt of lace over the organza. A detachable lace bordered train falls to a chapel length. Organza choir roses touched with pearls holds the bouffant and train length veils of silk illusion.

Mrs. Pete Dubenion of Flint, sister of the bride, and D. J. Carpenter of Ann Arbor were the honor attendants.

Bridesmaids were Miss Margie Ostram, sister of the bride, Miss Mary Ann Overfield and Miss Rosemary Overfield, all of Flint. Miss Virginia Caudill, sister of the bridegroom and Miss Robin Parks, both of Chelsea; Miss Alice Coughlin of Davison; and Mrs. Richard Hamline of Indiana.

A flower girl was Susan Coughlin of Davison and ring bearer was Dale Neddles of Ann Arbor. Groomsmen were Gordon Carpenter, Larry Carpenter and Gary Scripser, all of Chelsea; James Stacker of Ohio, Bill Conley of Stokbridge, Pete Dubenion and Larry Overfield of Flint.

Seating guests were Claude Detric of Chelsea and Robert Coughlin of Davison.

A reception followed at the K. of C. hall, Davison.

The newlyweds will make their home in Ann Arbor.

### Farewell Party Held Sunday for Willard Ferrys

Mr. and Mrs. Willard Ferry, 116 Pierce St., who have sold their home and are planning to move into a new home at Lake Leelanau by May 1, were honored at a Sunday afternoon Open House at the Chelsea Rebekah Lodge Hall. Her parents and sister, Mr. and Mrs. Gale Gilson and Mr. and Mrs. Robert Butler and children, Jay and Lois, acted as hostesses.

A pot-luck luncheon was held with all Chelsea relatives helping. Cake from the Jim Bristle wedding, attended by all the night before, was furnished by the Boyer family and was included in the menu.

A money tree was made by Mrs. Mac Parckard and "leaves" were signed and hung on the tree for the honored couple.

A guest book was signed and presented to the Ferrys for a memento.

Relatives from out of town included Mrs. Bea Hasetschwerdt, David and friend from Homer; Mr. and Mrs. David McKee from Coldwater; Mr. and Mrs. Lawrence Brown from Conklin; Mr. and Mrs. Ray Doering, Mr. and Mrs. Norman Hannwald, Mrs. Richard Foster, from Ann Arbor; Mr. and Mrs. Mike Tarasow and son, Teddy, from Ypsilanti; and Mr. and Mrs. Joe Eaton from Mulliken.

Mrs. Ferry is employed at Chelsea Manufacturing and her husband works for a local construction company. They have lived here for 20 years.

### Girl Scouts

**TROOP 47**  
Girl Scout Troop 47 met Saturday at the Congregational church. Patrol 4 did the flag ceremony. Treats were bought with money from the treasury. We talked about going to Greenfield Village. We ended with "taps."

Karen Kern, scribe.

### Judge R. Campbell Addresses Chelsea Older Adult Group

Judge Ross Campbell of the Washtenaw county Probate Court, was the speaker at the April 19 meeting of the Older Adult Group of the Methodist church. He was introduced by the Rev. Robert Worgess during the after-dinner program period.

Judge Campbell took as his topic the history of Washtenaw county, going back to 1800 when the first families were known to have arrived. Detailed accounts of happenings beginning in the 1820's when real settling of the county took place and slide pictures of Chelsea scenes from 1885 until 1890 were especially enjoyed by the 38 members present.

The opening devotional service, which included group singing, was led by Mrs. Herbert Paul.

Pink, green and yellow were the colors featured in the table decorations—one color for each of the three tables. There were also three birthday cakes, one centering each table and flanked by tall candles. The tables were arranged by Mrs. Rae Lillie and Mrs. Lyman Adams and the cakes were provided by Mrs. Adams, Mrs. Ella Walker and Mrs. Viola Johnson.

The birthdays of three members were observed—Mrs. Bertha Kate Riemenschneider, Mrs. Harold Knott and Lionel Vickers.

The next meeting of the group is scheduled for May 17, and St. Paul's XYZ group members are invited to be guests. Rolls, coffee, bread, butter and sugar will be furnished by the committee, the remainder of the meal to be pot-luck.

Chairman of the dining room committee for the meeting, Mrs. Rae Lillie, named Mrs. Neva Prudden, Mrs. Riemenschneider and Mrs. Lyman Adams to assist her while Mrs. Carl Schlosser, kitchen chairman, said she would name her committee later.

Welcoming committee for the May 17 meeting includes Mrs. Leona Evans, Mrs. Gladys Klump, Miss Laura Hieber, Mrs. Mary Wund and Lyman Adams.

### Fashion Notes

Two things are out for the coming season—tight pants and tight skirts—pants are much looser, especially around the bottoms and skirts are either pleated, A-shaped, gored or full.

High necklines are smart although boat shapes with narrow collars or scarfs are good.

**FAMILY PICNIC HONORS**  
**GUESTS FROM NEW YORK**  
The home of Gary Roderick was the scene of a family picnic Sunday. 41 guests were present to honor Mrs. Lola Heiber and Mrs. Fran Ross, who arrived by plane for a two-week visit in this area.

Mrs. Heiber is the sister of Mrs. Guy Murphy and the late Mrs. Laura Scripser of Chelsea. A former Chelsea resident, she took her first plane ride at 79 years of age from Crown Point, N.Y., accompanied by her niece from Warrensburg, N.Y.

A pot-luck dinner was served and pony rides were enjoyed by all the youngsters. Relatives came from Five Lake, Lansing, Ypsilanti, Livonia, Detroit, Grass Lake, Napoleon and Chelsea.



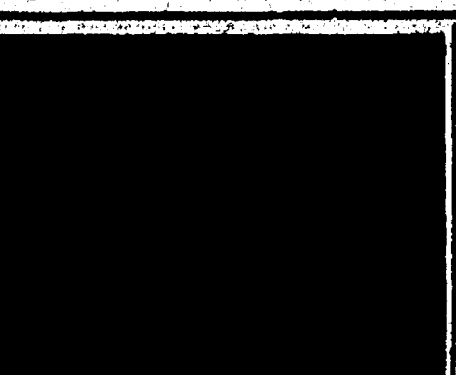
No Rod No Wave **Bodi Endure Permanent** \$10.00

Works Well on Any Hair

Limp, fine hair is springier; more buoyant... overcomes its inclination to lie flat against the head. Coarse, wiry hair is calm, more pliable. And any hair, including damaged and color-treated hair, is strengthened... revitalized seven weeks or more. P.S. You can color any hair immediately after you bodify... safety, beautifully!

Open Tuesday thru Saturday, 8:30 a.m. to 5 p.m.  
Open Wednesday and Thursday Evenings By Appointment  
Closed Mondays

**VILLAGE BEAUTY SALON**  
LORETTA PANNONE, Owner  
Judy Patrick - Eula Montgomery - Jean Sweet  
Mary Adams, Operators



### GIRL SCOUTS

**TROOP 58**  
Troop 58 opened their Monday meeting with the flag ceremony, then discussed business. After that we listened to poems and had refreshments. We played Taxi Cab and broke up into patrols to collect dues. We made Mothers' Day gifts. Meeting closed with the song "Peace."

Jane Scott, scribe.

### JUNIOR TROOP 82

Junior Girl Scout Troop 82 met April 16 with 29 members present. The flag ceremony was presented by "The Bluejays Patrol 3." After the business meeting Nancy Hepburn finished her Pen Pal badge. Mary Beth Allen did the Collector badge and showed us her collection of sea shells. The patrols made plans for the visit of sister scouts from Brownie Troop 247 at the next meeting. Duwana Villenure brought treats and the meeting was closed with "Taps" and "Squeeze."

On April 8, 18 members of Junior Troop 82, leaders and guests Gena Shoemaker and Mary Verchereau from Cadette Troop 98, had a cook-out at the home of Mrs. Gary Albrecht on Waterloo Rd.

Since conditions were dry the Scouts made their Southern Goulash on Mrs. Albrecht's stove. During a walk in the woods, a downpour of rain occurred, but it cleared up later and the girls enjoyed some outdoor games.

**TROOP 82**  
27 members of Girl Scout Troop 82 attended the April 16 meeting. The meeting was opened with the flag ceremony. Mrs. Keith Schuelke told members where to get the Girl Scout cookies. Brownies of Troop 247 are coming to visit the Girl Scouts of Troop 82 April 23.

Susan Forner, Vickie Walz, scribes.

**BERMUDA LOCATION**  
Bermuda is often erroneously placed in the West Indies. In fact, it is more than a thousand miles to the north. The nearest point of land is Cape Hatteras, N.C., some 600 miles to the northwest.



Foreverness... A perfect diamond is the perfect symbol of your love... forever.

REGISTERED **Keepsake** DIAMOND RINGS

### WINANS JEWELRY STORE

### "I GOT MINE FROM MY MASSEY-FERGUSON DEALER"

SAYS JERRY COLONNA

**10 HP WORKHORSE FUNHORSE**

This is the new MF 10. Works like a tractor because it's built like a tractor by the people who make more tractors than anybody—Massey-Ferguson.

See Our Display at **SPRAGUE BUICK - OLDS - OPEL, Chelsea** or phone 475-7159 for appointment to drive one on your own property.

### MERRITT'S SERVICE

Chelsea, Mich.

### FOR THE DAD WHO HAS EVERYTHING... EXCEPT A COMFORTABLE CHAIR

Give dad the most comfortable experience of a lifetime. Give him a La-Z-Boy® Recline-Rocker® America's comfort favorite. This is the chair that became famous for its smooth, effortless reclining action. The Recline-Rocker® will cater to his every mood... rocking, lounging, TV viewing, catnapping, even full bed reclining. He'll love La-Z-Boy's® exclusive Comfort Selector which provides just the right leg rest comfort position for perfect relaxation... with or without reclining the chair. Visit us, your authorized La-Z-Boy® dealer, and give dad the most comfortable experience of a lifetime... he'll love you for it.

**AS SHOWN - \$199.95**  
Other Models from \$139.95

The Recline-Rocker® is a favorite among women for its choice of many attractive styles. No matter what your decorator preference... Traditional, Contemporary, Early American, or Modern, you'll find the right style to enhance your home. And there are hundreds of decorator fabrics to choose from.

Style 821

### LA-Z-BOY® RECLINA-ROCKER®

# MERKEL BROTHERS





A NATHAN COLLINS ORIGINAL was named kite with "most original design" at the Cub Scout Pack 415 kite-flying contest Sunday afternoon. Nathan, Den 1 member, and father Hal joined other scouts and dads for the kite and pet show at the home of Norman Bauer on Waterloo Rd.

Subscribe Today to The Standard!

**Generate more profits with DEKALB XL POWERPLANT**

The High Efficiency Corn hybrids for modern management. See me for your hybrids now!

**LLOYD BOYCE**  
2791 Dancer Road, Dexter  
Phone 426-9352

**DONALD IRWIN**  
16880 Grass Lake Road, Grass Lake  
Phone 522-4247



### The reasons are in Bolens Difference Designed Features

\* Two models, both with recoil start and Bolens exclusive center pivot steering \* Dual speed range for two forward, two reverse speeds \* (Model 914) 5 hp, 14" inside turning radius, 28" cutting width \* (Model 915) 6 hp, 16" inside turning radius, 32" cut \* Attachments available for year 'round versatility

**BOLENS**

**Chelsea Hardware**  
110 South Main St. Phone GR 9-6311

## DEATHS

### Mrs. Edward Beissel Dies Saturday at Rest Home Following Long Illness

Mrs. Cora Beissel, a life-long Chelsea resident, died Saturday morning at Cedar Knoll Rest Home Grass Lake.

Mrs. Beissel, 89, lived at 542 McKinley St., for many years before entering Cedar Knoll five years ago.

She was born April 19, 1880, to John P. and Julia Hindelang Foster in Washtenaw county and married Edward Beissel Aug. 21, 1909 at St. Thomas church, Ann Arbor. He preceded her in death Dec. 31, 1937.

She was a member of St. Mary's church and the Altar Society of St. Mary's and was formerly a practical nurse in the Chelsea area.

Survivors include three sons, Richard of Ann Arbor, Gerald of Concord, Edward of Chelsea; two daughters, Mrs. Arnold (Elinor) Staudacher, Jackson, Mrs. Joe (Julianne) Scott, Chelsea; two brothers, Arthur Foster of Birmingham, Bert Foster of Ann Arbor; two sisters, Mrs. Edith Stevens of Detroit, Mrs. Josephine Reiter of Salt Lake City; 12 grandchildren and 19 great-grandchildren.

Funeral services were at 10 a.m. Tuesday from St. Mary's church with the Rev. Fr. Francis Wahowiak officiating. Burial followed in Mt. Olivet Cemetery. Arrangements were by Staffan Funeral Home.

### Mrs. Harry E. Smith Dies Early Wednesday Morning at Methodist Home

Mrs. Harry E. Smith, (Emily A.), 84, a resident of the Chelsea Methodist Home, died at the Home early Wednesday morning, April 23. She entered the Home Feb. 25, 1963 from Harrisville.

She was born Nov. 9, 1884 in Bad Axe, to Isaac and Fannie England Philip. She married the Rev. Harry E. Smith Dec. 28, 1910. He preceded her in death Dec. 28, 1925. She was a member of the Bad Axe Methodist church.

Surviving are two sons, Raymond of Southfield, and Glenn Smith of Birmingham; a daughter, Mrs. Clifford (Gladys) Eden, of Detroit; 10 grandchildren and one great-grandchild.

Funeral services will be held at the Methodist Home Chapel Friday, April 25, at 10:30 a.m. with the Rev. William Johnson, chaplain of the Home, officiating. Burial will follow in Westlawn Cemetery, Wayne. Friends may call at the Burghardt Funeral Home.

### Sgt. Richard McCalla Transferred to Vietnam

Sgt. Richard McCalla, son of Mr. and Mrs. Ralph McCalla, 12515 Old US-12, has been transferred from Little Rock, Ark., AFB to Tan Son Nhut AFB, Vietnam.

He is serving as postal courier in the orderly room of District IV Headquarters five miles from Saigon. His wife, Grace, is staying with her parents, Mr. and Mrs. Robert Kushmaul, 1451 Guenther Rd. Sgt. McCalla's address is:

Sgt. Richard R. McCalla  
AF 16877073  
Vietnam District (HQ-Comd.) (SANT)  
Detach 1500, USAF PAC-PRC  
APO San Francisco, Calif. 96348

### Mrs. Joseph A. Dreyer Dies Friday Morning In Jackson Hospital

Mrs. Joseph Ambrose (Selma) Dreyer, 50, of Gregory, died Friday morning, April 18, in Jackson Hospital.

She was born July 11, 1918 in Fowlerville and married Dreyer, a Chelsea native and son of Mr. and Mrs. Joseph C. Dreyer.

In addition to her husband, she is survived by three daughters, Mrs. Donald (Kathleen) Mason of Fowlerville, Mrs. Jerome (Susan) Brown of Howell, and Miss Gladys Peterson of Lansing; six grandchildren; her father, Mrs. Elizabeth Ludtke of Gregory; and three brothers, Levi and Harold Ludtke of Gregory and Herman Ludtke of Brighton.

Funeral services were Monday morning from Caskey Funeral Home, Stockbridge, with burial in Plainfield Cemetery. The Rev. Albert Schmidt officiated.

### William F. Blunk Chelsea Woman's Father Dies Following Long Illness

William Frederick Blunk, 95, of 127 Watt Rd., rural Lyndon township, died April 19 at the Martin Luther Home, South Lyon, after a long illness.

He was born Sept. 28, 1875, in Livonia to August and Augusta Blunk and married Della Peterson who preceded him in death in 1932. He lived in Plymouth for most of his life and moved to Chelsea in 1951 to live with his daughter, Mrs. Louis Foreman.

He had been a moulder. He was a member of Plymouth Methodist church.

Survivors, in addition to his daughter, include a son, Lawrence W. Blunk, Ann Arbor; a sister, Mrs. Clara Dicks; five grandchildren and five great-grandchildren.

Funeral services were April 21 at Shrader Funeral Home, Plymouth, with the Rev. George T. Nevin officiating. Interment was in Riverside Cemetery, Plymouth.

### Mrs. Joseph Wireman Chelsea Man's Sister Dies in Portsmouth, O.

Mrs. Joseph Wireman, 72, of 1414 Fourth St., Portsmouth, O., sister of Henry Patrick of Chelsea, died Saturday, April 13 at Mercy Hospital, Portsmouth.

Surviving are her husband, Joseph; two sons, Frank of Columbus, O., and Ward, at home; two daughters, Mrs. Helen Phipps of Tampa, Fla. and Mrs. Ruth Conley of Columbus; two sisters, Mrs. Peachie Fields of Ashland, Ky., and Mrs. Geraldine Willis of Michigan; a brother, Henry Patrick of Chelsea, and two grandchildren.

The Rev. Richard Wilburn officiated at funeral services Wednesday at Mart Glynn Funeral Home, Portsmouth. Interment was in Scioto Burial Park.

### FARMER NAMED TO POST

President Nixon has named Negro leader James Farmer to his subcommittee. Robert H. Finch, Secretary of Health, Education and Welfare said Farmer, would have "considerably upgraded status" in the job and a powerful voice in planning a reorganization of HEW.

Telephone Your Club News To GR 5-3581.

### Grass Lake Man Arrested Here on Driving Charges

A Grass Lake man was arrested for leaving the scene of a property damage accident and driving while under the influence of intoxicants Tuesday night.

Bruce James Schauer, 22, of 15892 Gorton Rd., Grass Lake, was arrested and charged with driving into a white iron post in front of Burghardt Funeral Home at 214 E. Middle at 10:30 a.m. Tuesday and leaving the scene. Two witnesses were able to describe the car as a new gold Plymouth.

Later on employee of Superior Ambulance Co., reported that Schauer almost ran into the ambulance and several other vehicles when leaving the Pub bar in a gold Plymouth with what looked like fresh damage on the right door.

He was arrested at 12:30 p.m. after he was spotted driving slowly and weaving at Freer and Old US-12 East by police officers. He admitted that he had an accident and white paint was found on the dented right door.

Schauer was released on \$100 bond and arraignment has been set for Monday.

### Maintenance Cuts Ordered By State Highway Dept.

Lansing—Across the board cuts in maintenance of state highways have been ordered by the Department of State Highways for the remainder of fiscal 1968.

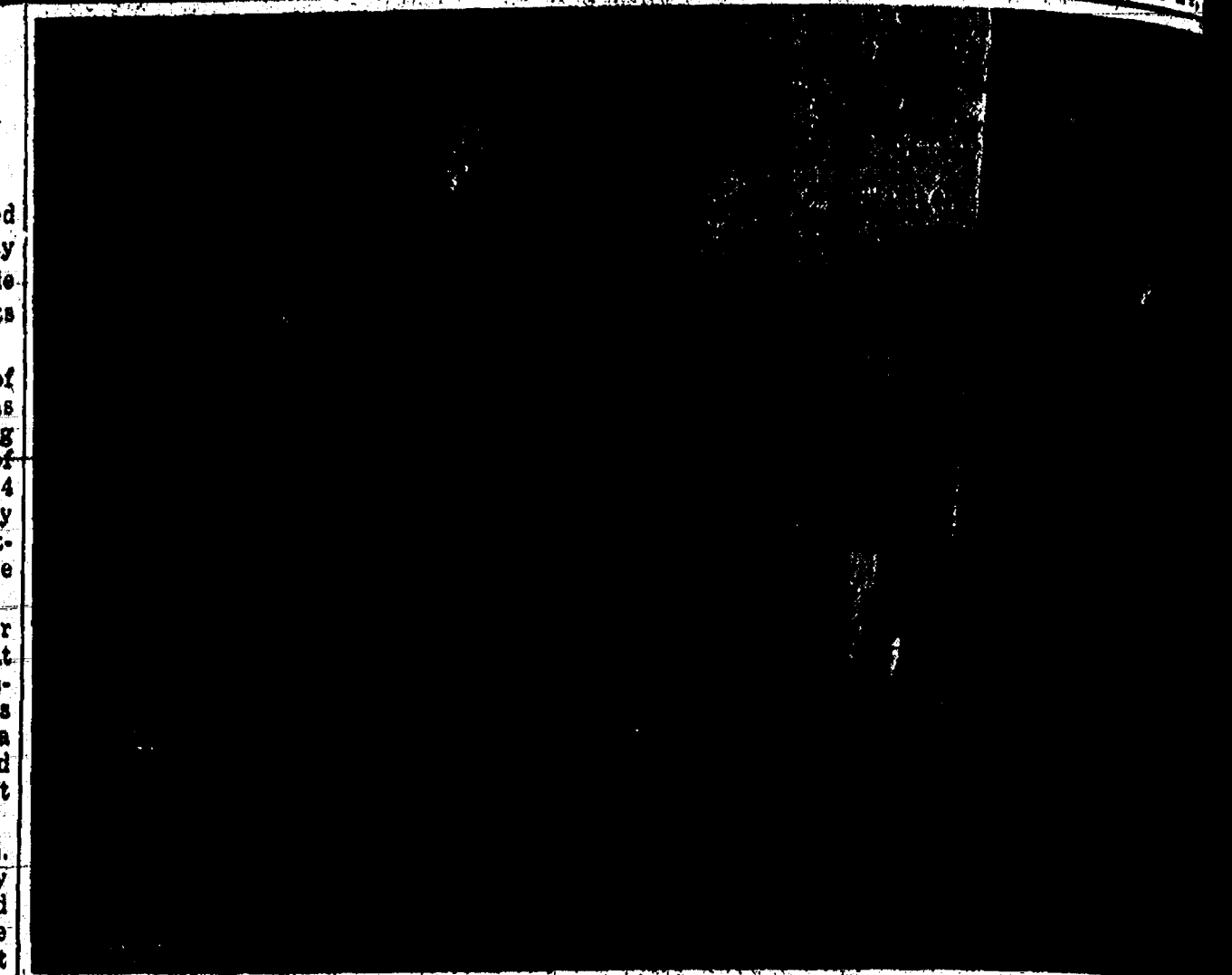
The cuts result from a \$2.5 million deficit in the Department's maintenance budget, caused in part by the heavy snowfall last winter in northern Michigan.

The heavy snows cost \$1 million more than had been allocated for overtime and equipment rentals to keep state highways open. The Department will request a supplemental appropriation from the Michigan Trunkline Fund to compensate for this portion of the deficit.

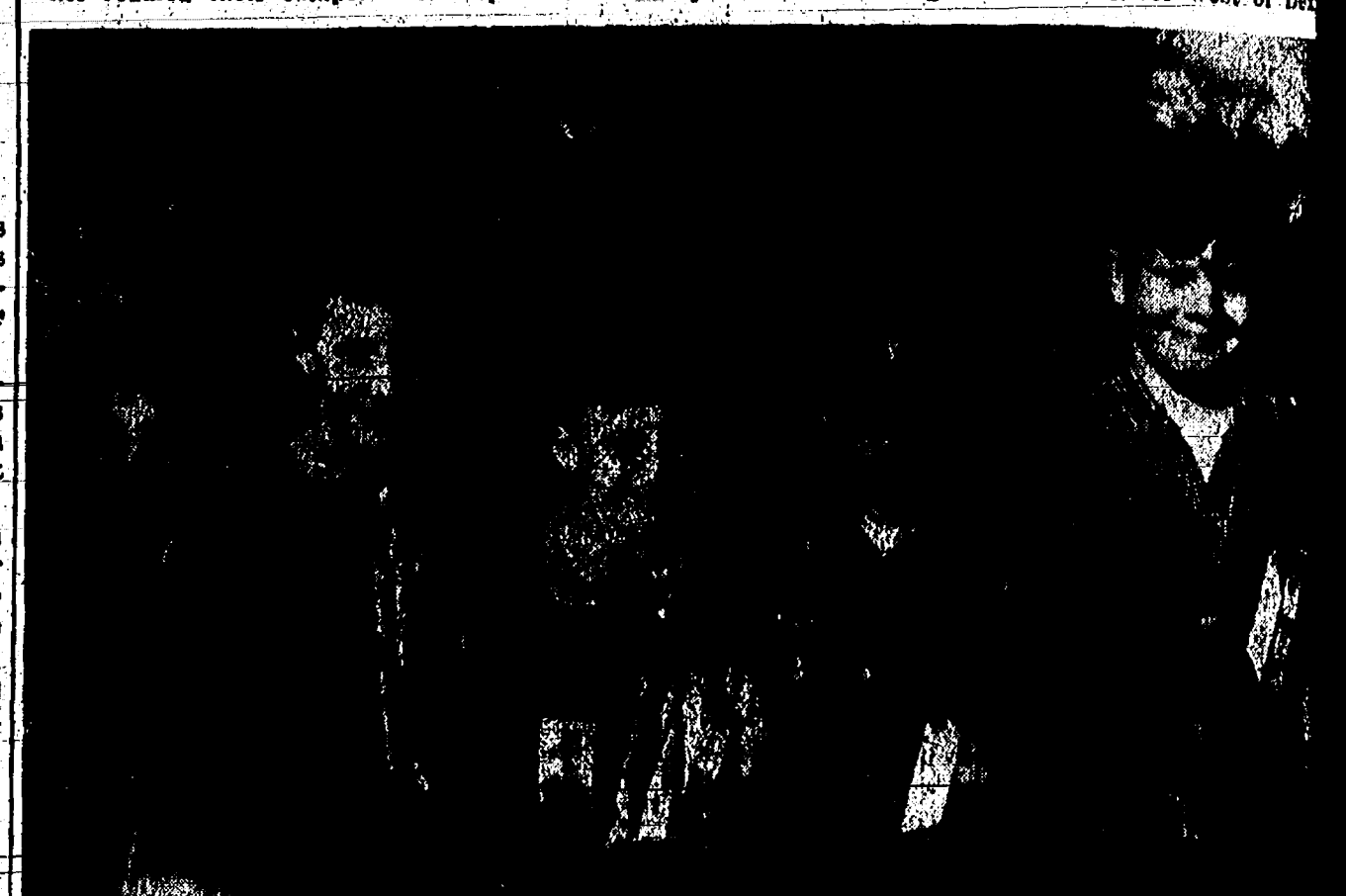
The remaining deficit was a result of increased costs for maintenance services performed by counties and additional freeway lighting costs resulting from recent state legislation. Part of this additional expense will be absorbed through use of the Department's \$500,000 emergency maintenance fund.

In addition, heavy maintenance, except safety work, has been suspended, and normal maintenance operation has been trimmed by 15 percent. The latter includes elimination of overtime, and the postponement of surfacing, patching and shoulder work until after July 1.

A friendly tip: Beware of the man who says, "I will take up only a few minutes of your time."



"WOLF PATROL"—BEWARE! That's what the patrol flag cautioned, as Wolf Patrol members Cecil Clouse, far left, Dick Seyfried, center, (he was really a visitor from an alien patrol) and Lloyd Bauer, third highest kite flier, largest pet, pony, photo in Ricky Taylor, second highest kite flier, evening, April 19, during the Outdoor Week which adult Boy Scout unit leaders from Chelsea, Dexter, Milan, Saline and Whitmore Lake helped. The event was headquartered at Newkirk along the Huron River west of Detroit.



WINNERS at the Pack 415 Kite Derby and pet show were, from left, Mark Seyfried, smallest pet, most original kite design; and Dennis Bauer, supplies; David Dawson, highest kite flier; Bart Bauer, third highest kite flier, largest pet, pony, photo in Ricky Taylor, second highest kite flier, and most unusual pet, guinea pig; Nathan Clouse, far left, Dick Seyfried, center, (he was really a visitor from an alien patrol) and Lloyd Bauer, third highest kite flier, largest pet, pony, photo in Ricky Taylor, second highest kite flier.

**WHO KNOWS?**

1. Name the Vice Presidents who served with President Franklin D. Roosevelt.
2. Who was the founder of the Salvation Army?
3. When was the telephone patented?
4. When were the G.I. Scouts organized?
5. Which war was also known as the War of Independence?
6. What famous American colonist was imprisoned for refusing to remove his hat in court?
7. Who was the Premier of France at the time of her defeat by Germany during World War II?
8. From what would you be suffering if you had "coryza"?
9. What is the "Holy Frail"?
10. In what year did Wendell Wilkie run for the presidency?

**'Who Knows' Answer**

1. John N. Garner, Henry Wallace and Harry S. Truman.
2. William Booth.
3. March 7, 1876.
4. March 12, 1912.
5. The Revolutionary War.
6. William Penn; the Quakers.
7. Paul Reynaud.
8. The common cold.
9. The legendary cup from Jesus drank at the Last Supper.
10. In 1940.

**New low Price!!**

**Automatic Washer**

Model WA-500D

- Wash Cycle Control Easy to set for any fabric wash load!
- Spiral Activator® Vigorous 3-zone washing action—gentle, yet thorough cleaning!
- Spray Rinse
- Turbo-Type Pump
- Unbalance Load Control
- Counter depth and height

**\$178<sup>88</sup>**

OPEN FRIDAY UNTIL 9 p.m. CLOSE SATURDAY AT 4 p.m.

**FRIGID PRODUCTS**

113 N. Main St., Chelsea LLOYD R. HEYDLAUFF Phone GR 9-6651



clubman summarizes the traditional blazer

clubman sportcoats

A light classic in a 3-button blazer, designed to take the summer lightly. With classic natural shoulder styling, center vent, and notched lapels. Breeze through this summer's air with the greatest of ease. In the greatest of blazers. By Clubman, of course.

\$4000 - \$4500 - \$5000

**STRIETER'S MEN'S WEAR**